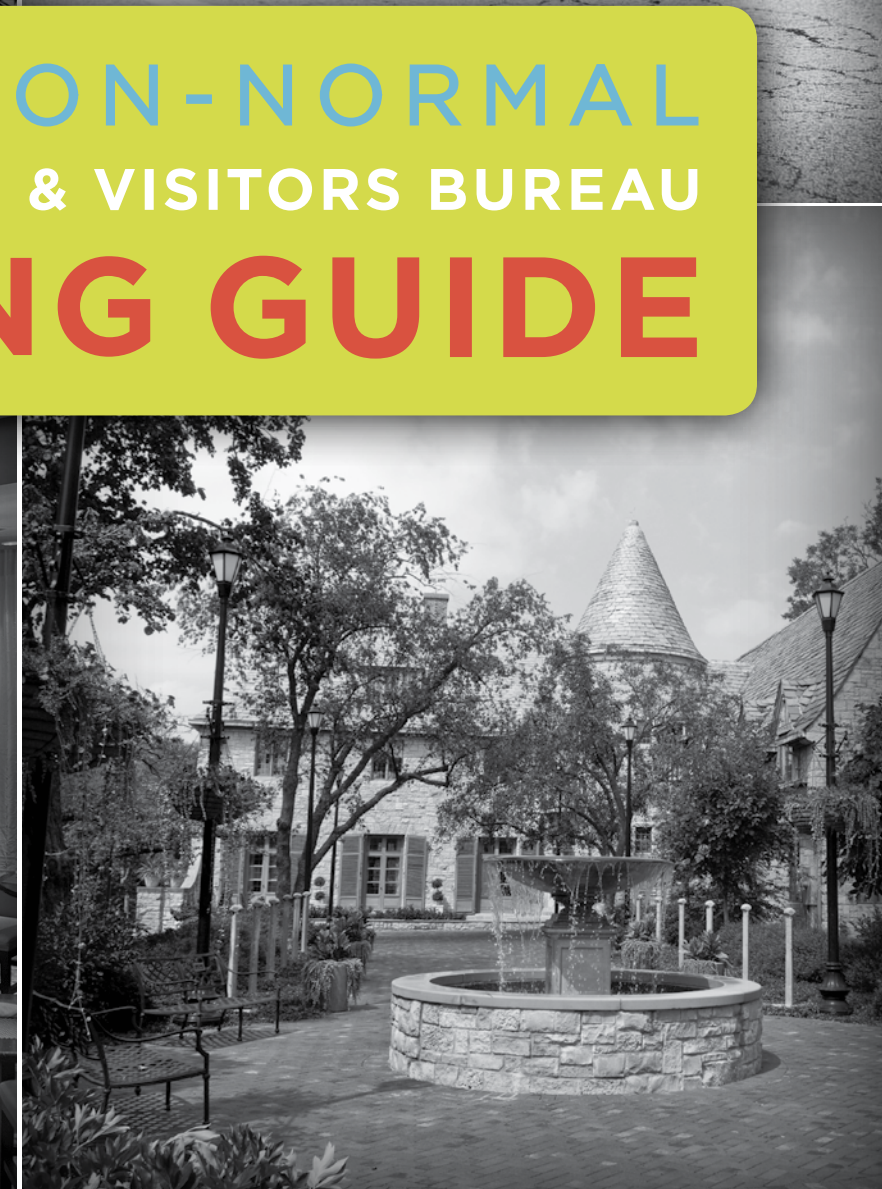




BLOOMINGTON-NORMAL AREA CONVENTION & VISITORS BUREAU PLANNING GUIDE



3201 CIRA Drive, Suite 201, Bloomington, IL 61704
inside the Central Illinois Regional Airport

800.433.8226 • 309.665.0033 • VisitBN.org

*Published by the BNACVB. The information in this guide was current at the time of publication.
The BNACVB assumes no responsibility for errors, changes or omissions and reserves the right to
edit any listing for content and/or length. Maps and diagrams are not to scale.*

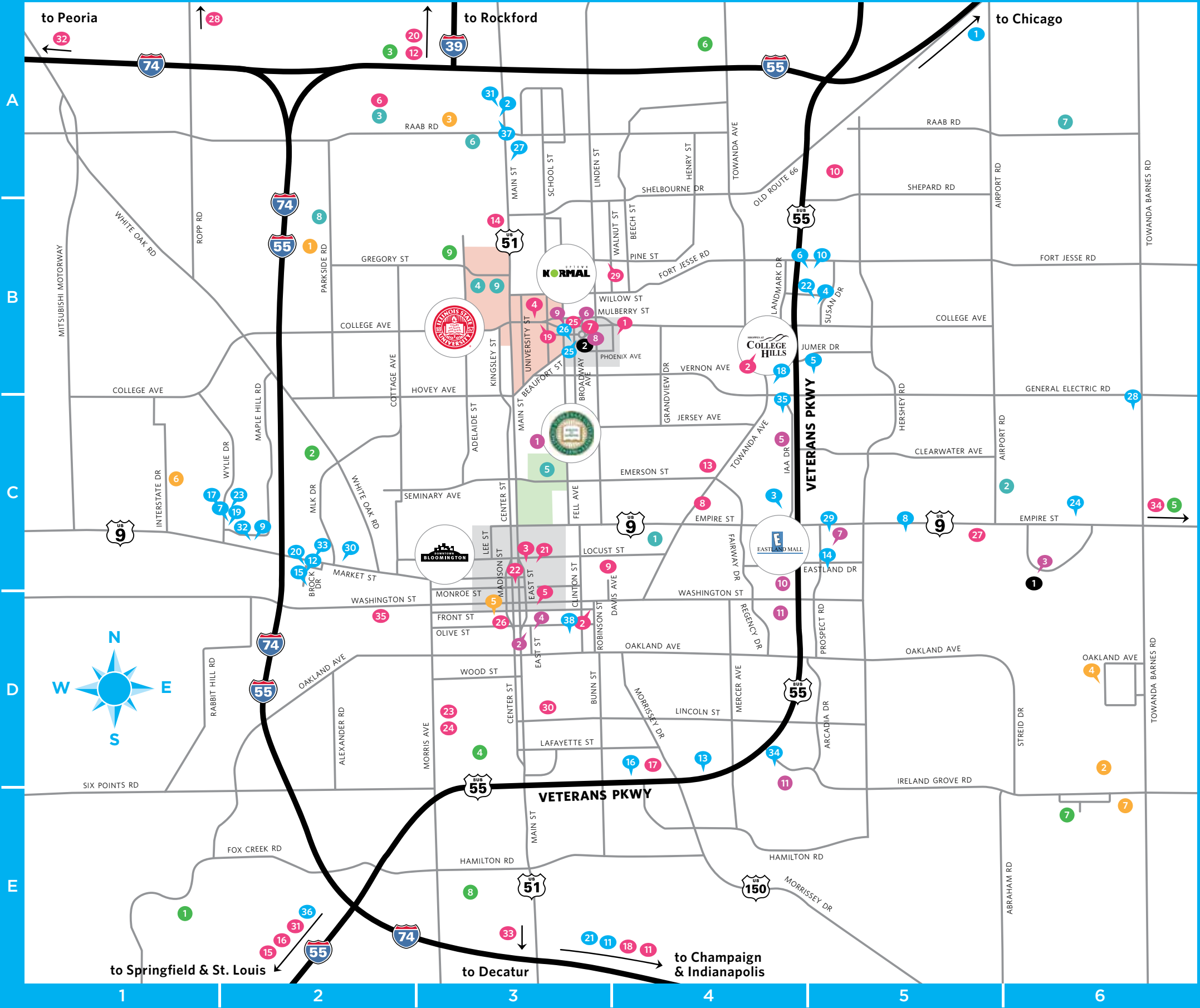
© 2019 BNACVB. All rights reserved. January 2019—200



AREA MAP



BLOOMINGTON-NORMAL AREA MAP



ACCOMMODATIONS

- | | |
|---|----|
| 1. America's Best Value Inn Chenoa | A5 |
| 2. Baymont Inn and Suites | A3 |
| 3. Best Western Plus Bloomington East | C4 |
| 4. Candlewood Suites Hotel | B5 |
| 5. Chateau Hotel and Conference Center | B5 |
| 6. Comfort Suites East | B5 |
| 7. Comfort Suites West | C2 |
| 8. Country Inn and Suites Airport | C5 |
| 9. Country Inn and Suites West | C2 |
| 10. Courtyard by Marriott | B5 |
| 11. Days Inn Le Roy | E4 |
| 12. Days Inn and Suites | C2 |
| 13. DoubleTree by Hilton | D4 |
| 14. Eastland Suites Hotel and Conference Center | C5 |
| 15. Econolodge Inn and Suites | C2 |
| 16. Extended Stay America | D4 |
| 17. Fairfield Inn and Suites | C2 |
| 18. Hampton Inn and Suites | B4 |
| 19. Hampton Inn West | C2 |
| 20. Hawthorn Suites by Wyndham Bloomington | C2 |
| 21. Holiday Inn Express Le Roy | E3 |
| 22. Holiday Inn Express and Suites | B5 |
| 23. Holiday Inn Express West | C2 |
| 24. Holiday Inn Hotel and Suites | C6 |
| 25. Hyatt Place | B3 |
| 26. Marriott Hotel and Conference Center | B3 |
| 27. Motel 6 | A3 |
| 28. Parke Regency Hotel & Conference Center | C6 |
| 29. Quality Inn and Suites East | C5 |
| 30. Quality Inn and Suites West | C2 |
| 31. Radisson Hotel & Conference Center Bloomington-Normal | A3 |
| 32. Ramada Limited and Suites | C2 |
| 33. Red Roof Inn | C2 |
| 34. Residence Inn by Marriott | D4 |
| 35. Super 8 Bloomington | C4 |
| 36. Super 8 McLean | E2 |
| 37. Super 8 Normal | A3 |
| 38. Vrooman Mansion | D3 |

GOLF COURSES

- | | |
|-------------------------------|----|
| 1. The Den at Fox Creek | E1 |
| 2. Golf Learning Center | C2 |
| 3. Hazy Hills Golf Course | A2 |
| 4. Highland Park Golf Course | D3 |
| 5. Indian Springs Golf Club | C6 |
| 6. Ironwood Golf Course | A4 |
| 7. The Links at Ireland Grove | E6 |
| 8. Prairie Vista Golf Course | E3 |
| 9. Weibring Golf Club at ISU | B3 |

COMMUNITY

- | | |
|---------------------------------------|--------|
| 1. Advocate BroMenn Medical Center | C3 |
| 2. Bloomington City Hall | D3 |
| 3. Bloomington-Normal Area CVB | C6 |
| 4. Bloomington Public Library | D3 |
| 5. COUNTRY Financial Home Office | C4 |
| 6. Economic Development Council | B3 |
| 7. McLean County Chamber of Commerce | C5 |
| 8. Normal City Hall in Uptown Station | B3 |
| 9. Normal Public Library | B3 |
| 10. OSF St. Joseph Medical Center | C4 |
| 11. State Farm Home Office | D4, E4 |

MAJOR ATTRACTIONS

- | | |
|--|--------|
| 1. Anderson Park and Aquatic Center | B4 |
| 2. BEER NUTS, Inc. | B4, D3 |
| 3. Bloomington Center for the Performing Arts | C3 |
| 4. Braden Auditorium | B3 |
| 5. The Castle Theatre | D3 |
| 6. Challenger Learning Center | A2 |
| 7. Children's Discovery Museum | B3 |
| 8. Community Players Theatre | C4 |
| 9. David Davis Mansion | C3 |
| 10. DESTIHL Brewery | A5 |
| 11. Epiphany Farms Hospitality Group | E4 |
| 12. Evergreen Lake at Comlara County Park | A3 |
| 13. Ewing Cultural Center | C4 |
| 14. Fairview Park and Family Aquatic Center | B3 |
| 15. Funks Grove Pure Maple Sirup | E2 |
| 16. Funks Prairie Home & Gem and Mineral Museum | E2 |
| 17. Grady's Family Fun Park | D4 |
| 18. Grand Village of the Kickapoo Park | E4 |
| 19. ISU Planetarium | B3 |
| 20. Lake Bloomington | A3 |
| 21. McLean County Arts Center | C3 |
| 22. McLean County Museum of History / Cruisin' with Lincoln on 66 Visitor Center | C3 |
| 23. Miller Park Pavilion & War Memorial | D3 |
| 24. Miller Park Zoo | D3 |
| 25. Normal Theater | B3 |
| 26. Pepsi Ice Center | D3 |
| 27. Prairie Aviation Museum | C5 |
| 28. Ropp Jersey Cheese Farm | A2 |
| 29. Ryburn Place at Sprague's Super Service | B4 |
| 30. Stevenson Graves at Evergreen Memorial Cemetery | D3 |
| 31. Sugar Grove Nature Center | E2 |
| 32. Sunset Lake Vineyards & Winery | A1 |
| 33. Synergy Flight Center | E3 |
| 34. Twin Groves Wind Farm | C6 |
| 35. Upper Limits Rock Climbing | D2 |

EVENT COMPLEXES

- | | |
|--|----|
| 1. Champion Fields at Maxwell Park | B2 |
| 2. Community Soccer Fields | D6 |
| 3. The Corn Crib | A3 |
| 4. Game Time Gym II | D6 |
| 5. Grossinger Motors Arena | D3 |
| 6. McLean County Fairgrounds/ Interstate Center | C1 |
| 7. McLean County Pony Fields at the Shira Baseball Complex | E6 |

AREA EDUCATION

- | | |
|---------------------------------|----|
| 1. Bloomington High School | C4 |
| 2. Central Catholic High School | C6 |
| 3. Heartland Community College | A2 |
| 4. Illinois State University | B3 |
| 5. Illinois Wesleyan University | C3 |
| 6. Lincoln College Normal | A3 |
| 7. Normal Community High School | A6 |
| 8. Normal West High School | B2 |
| 9. University High School | B3 |

TRANSPORTATION

- | | |
|--------------------------------------|----|
| 1. Central Illinois Regional Airport | C6 |
| 2. Uptown Station/Amtrak | B3 |

SHOPPING

- | | |
|--------------------------------|----|
| • Eastland Mall | C4 |
| • Downtown Bloomington | D3 |
| • The Shoppes at College Hills | B4 |
| • Uptown Normal | B3 |

Map is not to scale. Contact the Bloomington-Normal Area Convention and Visitors Bureau at 800.433.8226 for help finding specific locations.



Bloomington-Normal Area Convention and Visitors Bureau

3201 CIRA Drive, Suite 201, Bloomington, IL 61704
inside the Central Illinois Regional Airport

800.433.8226 • 309.665.0033 • VisitBN.org

*Published by the BNACVB. The information in this guide was current at the time of publication.
The BNACVB assumes no responsibility for errors, changes or omissions and reserves the right to
edit any listing for content and/or length. Maps and diagrams are not to scale.*

© 2019 BNACVB. All rights reserved. January 2019—150

MEETINGS



WELCOME TO
BLOOMINGTON-NORMAL



YOUR DESTINATION FOR MEETINGS AND CONVENTIONS!

Bloomington-Normal offers excellent facilities, accessibility and services at an affordable cost. Centrally located along Interstates 55, 74 and 39, Bloomington-Normal is your premier meeting destination.

The professional staff members of the Bloomington-Normal Area Convention & Visitors Bureau are ready to assist you from site selection through post-convention follow-up to ensure a successful event. We hope you will visit us soon and let our premier location, facilities and affordability increase attendance at your next meeting.

DRIVING HOURS TO BLOOMINGTON-NORMAL

ILLINOIS

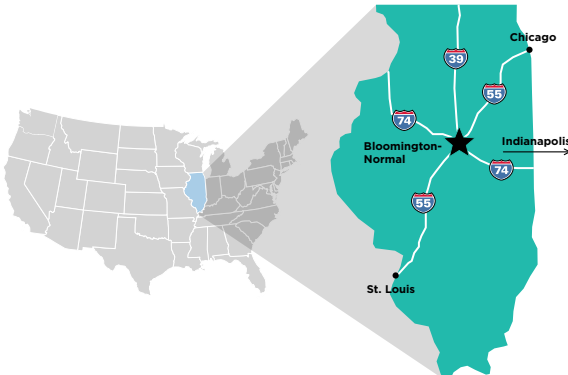
- Carbondale / 4
- Champaign-Urbana / .75
- Chicago / 2
- Decatur / 1
- Peoria / .75
- Quad Cities / 2.5
- Rockford / 2
- Springfield / 1

MIDWEST

- Cincinnati, OH / 4.5
- Cleveland, OH / 7.5
- Des Moines, IA / 4.5
- Detroit, MI / 6.5
- Indianapolis, IN / 2.5
- Kansas City, MO / 6
- Milwaukee, WI / 3.5
- Minneapolis, MN / 7.5
- Nashville, TN / 6.5
- St. Louis, MO / 2.5

BLOOMINGTON-NORMAL

is located in the heart of Illinois. 2 hours from Chicago and 2.5 hours from St. Louis and Indianapolis, our city is easy to access by air, rail, and through the intersection of Interstates 39, 55, 74 and Route 66.



CONTENTS

Group Services	2
The Chateau Hotel & Conference Center	3
DoubleTree by Hilton	4
Holiday Inn Hotel & Suites	5
Marriott Hotel & Conference Center	6
BW Premier Collection, Parke Regency Hotel & Conference Center	7
Radisson Hotel Normal	8
Bloomington Center for the Performing Arts	9
Grossinger Motors Arena	10
Heartland Community College	11
Interstate Center	12
Illinois State University	13
Illinois Wesleyan University	14
Additional Hotels	15-17
Additional Facilities	17



Bloomington-Normal Area Convention and Visitors Bureau
3201 CIRA Drive, Suite 201, Bloomington, IL 61704
inside the Central Illinois Regional Airport
800.433.8226 • 309.665.0033 • VisitBN.org

Published by the BNACVB. The information in this guide was current at the time of publication. The BNACVB assumes no responsibility for errors, changes or omissions and reserves the right to edit any listing for content and/or length. Maps and diagrams are not to scale.

© 2019 BNACVB. All rights reserved. January 2019 — 150





GROUP SERVICES



THE CHATEAU HOTEL & CONFERENCE CENTER

The Bloomington-Normal Area Convention and Visitors Bureau is a full-service bureau, offering a number of site selection, pre-event and on-site services.

SITE SELECTION / PLANNING ASSISTANCE

Our staff will research rates and availability of local facilities/hotels for your event. We are happy to coordinate tours of any facility.

NEWS RELEASE

Our area prides itself on the events we host. At your direction, we will develop and submit a news release to all local media detailing your event. Information for the news release is required at least two weeks prior to your event.

LITERATURE / MAPS

Please let us know if you would like any information on the Bloomington-Normal area for your participants. We can provide you with visitor guides, various brochures or tear-off maps. We can also customize an information sheet for your website or mailing.

COUPONS

Let us provide your group with access to our visitor coupons, featuring savings from dozens of area restaurants, businesses and more.

WELCOME

We can arrange for a Bureau representative or local dignitary to welcome your attendees to our city.

NAME BADGES

We will provide name badges for your attendees at a cost. The name badge can hold up to three lines of text as well as your group's logo. A complete list of names is required at least three weeks prior to your event.

TOUR ASSISTANCE

With unique and exciting attractions, your attendees will have a great time in Bloomington-Normal. Our area offers historical tours, cultural activities, educational experiences, and more. Let us know if we can help schedule some exciting activities for spouses, family members and attendees during your event. Bloomington-Normal tours include:

- Barn Quilt Heritage Trail
- BEER NUTS, INC.
- Bloomington Center for the Performing Arts
- Cruisin' with Lincoln on 66 Visitors Center
- David Davis Mansion
- Epiphany Farms
- Ewing Cultural Center
- Funk's Prairie Home and Gem & Mineral Museum
- Funk's Grove Pure Maple Sirup
- Mackinaw Valley Vineyard
- McLean County Museum of History
- Prairie Aviation Museum
- Sunset Lake Vineyards and Winery
- Twin Groves Wind Farm

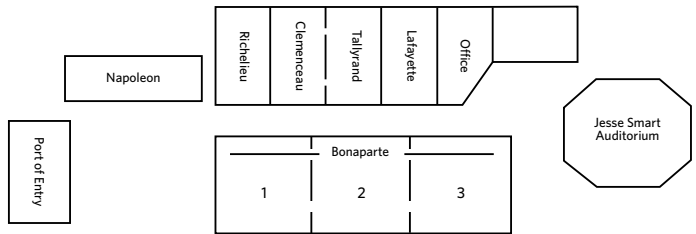


THE CHATEAU BLOOMINGTON HOTEL AND CONFERENCE CENTER

1621 Jumer Drive, Bloomington, IL 61704
BloomingtonChateau.com / 309.662.2020

The Chateau is a unique-themed, full-service hotel and conference center offering 180 beautifully designed guest rooms and 9,000 square feet of meeting space. The Chateau offers banquet and meeting facilities that will accommodate up to 500 guests and a unique, private 100-seat indoor amphitheater that is ideal for training seminars and product displays. The Chateau is an excellent destination for conventions, conferences and meetings.

Parking: 180+



	Ceiling Height	Dimensions (ft ²)	Banquet	Theater	Classroom	U-Shape
Bonaparte	16'	110' x 44' (4,840)	350	480	280	100
Bonaparte (1 Section)	16'	36' x 44' (1,585)	110	125	85	35
Clemenceau & Tallyrand	9'	30' x 24' (690)	40	40	25	20
Lafayette	9'	15' x 24' (360)	25	20	10	10
Clemenceau	9'	15' x 24' (360)	25	20	10	10
Richelieu	9'	15' x 24' (360)	25	20	10	10
Tallyrand	9'	15' x 24' (360)	25	20	10	10
Jesse Smart Auditorium	-	Stage = 16' x 7.5'	-	100	90	-
Port Of Entry	9'	17' x 31' (527)	50	60	45	20
Napoleon	9'	16' x 35' (560)	25	30	25	20



DOUBLETREE BY HILTON



10 Brickyard Drive, Bloomington, IL 61701
Bloomington.DoubleTree.com / 309.664.6446

The Doubletree by Hilton is located at the corner of Brickyard Drive and Veterans Parkway in Bloomington. Boasting 197 rooms, including 12 luxurious whirlpool suites and a TGI Friday's Restaurant, the hotel also offers 20,000 square feet of meeting space that can accommodate up to 1,000 people. It's everything you've ever wanted in your convention hotel—and then some!

Parking: 813

	Ceiling Height	Dimensions (ft²)	Banquet	Theater	Classroom	U-Shape
Brickyard I	16'	33' × 63' (2,079)	120	165	120	45
Brickyard II	16'	30' × 63' (1,890)	120	165	100	45
Brickyard III	16'	30' × 63' (1,890)	120	150	100	45
Brickyard IV	13'	33' × 50' (1,650)	120	130	80	30
Brickyard V	13'	34' × 50' (1,700)	120	130	80	30
Brickyard VI	13'	33' × 50' (1,650)	120	120	80	30
Brickyard Ballroom (I-VI)	16'	193' × 63' (12,159)	670	1,086	-	-
Brookridge	8'	28' × 29' (812)	50	60	35	25
Ironwood	8'	36' × 19' (684)	30	50	20	20
Fox Creek	8'	21' × 26' (546)	30	20	20	15
Prefunction Area	13'-16'	(4,875)	380	-	-	-
Northbridge	8'	13' × 18' (234)	10	12	9	8



3202 East Empire Street, Bloomington, IL 61704
HolidayInn.com/BloomingtonIL / 309.662.4700

The entire staff of the Holiday Inn & Suites Bloomington welcomes the opportunity to serve your guests. The hotel is located across from the Central Illinois Regional Airport in Bloomington's fastest growing eastside neighborhood. Let the professional staff take care of the details of your event. We invite travelers to an exclusive guest experience in the completely renovated guest rooms, function rooms and public areas. All 126 of the luxurious rooms and suites include microwave, refrigerator, HD televisions, and WIFI. The Holiday Inn & Suites is a proud member of the IHG Green Engage program and the Stay Green program of the Illinois Hotel & Lodging Association. In addition, local favorite, the adjoining Baxters American Grille offers an excellent dining experience.

Parking: 227

	Ceiling Height	Dimensions (ft²)	Banquet	Theater	Classroom	U-Shape
Ballroom	10'	100' × 40' (4,000)	275	300	200	108
Marie Litta	10'	37' × 40' (1,480)	80	126	56	36
Sarah Raymond	10'	25' × 40' (1,000)	64	60	30	24
Rachel Crothers	10'	37' × 40' (1,480)	80	126	56	36
Litta & Raymond	10'	62' × 40' (2,480)	128	186	90	60
Raymond & Crothers	10'	62' × 40' (2,480)	128	186	90	60



HOLIDAY INN HOTEL & SUITES

Marie Litta	Sarah Raymond	Rachel Crothers
-------------	---------------	-----------------



MARRIOTT

HOTEL & CONFERENCE CENTER



201 Broadway Avenue, Normal, IL 61761
MarriottNormal.com / 309.862.9000

The cornerstone of Normal's uptown renewal, the Marriott Hotel & Conference Center is surrounded by the best dining, entertainment and shopping the town has to offer. The hotel has 228 guest rooms and is conveniently connected to the Normal Theater. It is just a short walk from the Children's Discovery Museum, Uptown Station, Illinois State University and much more. Guests can enjoy a delicious meal in the hotel's restaurant, Jesse's Grille, grab a coffee in the lobby café or take a dip in the indoor pool.

Parking: 474

	Ceiling Height	Dimensions (ft ²)	Banquet	Theater	Classroom	U-Shape
Redbird Ballroom (A-G)	25'	200' × 100' (20,000)	1,200	2,000	1,000	-
Redbird A, B	25'	50' × 50' (2,500)	130	150	110	30
Redbird A & B (combined)	25'	50' × 100' (5,000)	220	300	200	-
Redbird C	25'	50' × 100' (5,000)	220	400	230	-
Redbird D	25'	50' × 100' (5,000)	220	400	230	-
Redbird E, F, G	25'	50' × 33' (1,650)	80	120	70	27
Redbird E, F, & G (combined)	25'	50' × 100' (5,000)	220	300	180	-
Beaufort	10'	26' × 30' (780)	40	50	40	24
Fell A	10'	28' × 30' (840)	40	50	36	24
Fell B	10'	28' × 30' (840)	40	50	36	24
Fell C	10'	28' × 30' (840)	40	50	36	24
North Executive Boardroom	10'	Seating for 12, conference style				
Broadway Executive Boardroom	10'	Seating for 12, conference style				



1413 Leslie Drive, Bloomington, IL 61704
ParkeHotel.com / 309.662.4300

The BW Premier Collection, Parke Regency Hotel & Conference Center is a beautifully designed, three-story boutique hotel located on the east side of Bloomington. The hotel boasts luxury accommodations with its 65 rooms and 5 whirlpool suites, and a sense of fun and escape from the ordinary. The Parke Regency Hotel & Conference Center offers 11,500 square feet of flexible meeting space for up to 1,000 guests. Experience BraiZe restaurant in the Parke Regency and you will leave with something to talk about!

Parking: 225

	Ceiling Height	Dimensions (ft ²)	Banquet	Theater	Classroom	U-Shape
Ballroom	16'	150' × 70' (10,500)	600	810	390	-
Hawthorne/Denali/Glacier -or- Hawthorne/Redwood/Sierra	16'	70' × 97' (6,790)	432	550	230	-
Redwood/Sierra/Glacier/Denali	16'	70' × 52' (3,640)	224	260	160	-
Hawthorne	16'	70' × 45' (3,150)	152	250	150	-
Redwood	14'	52' × 33' (1,716)	72	130	80	-
Sierra	14'	52' × 33' (1,716)	72	130	80	-
Denali	14'	52' × 33' (1,716)	72	130	80	-
Glacier	14'	52' × 33' (1,716)	72	130	80	-
Yosemite	14'	18' × 30' (540)	-	40	32	-
Yellowstone	14'	18' × 30' (540)	-	40	32	-



BW PREMIER COLLECTION, PARKE REGENCY

HOTEL & CONFERENCE CENTER



*Removable Air Walls



RADISSON

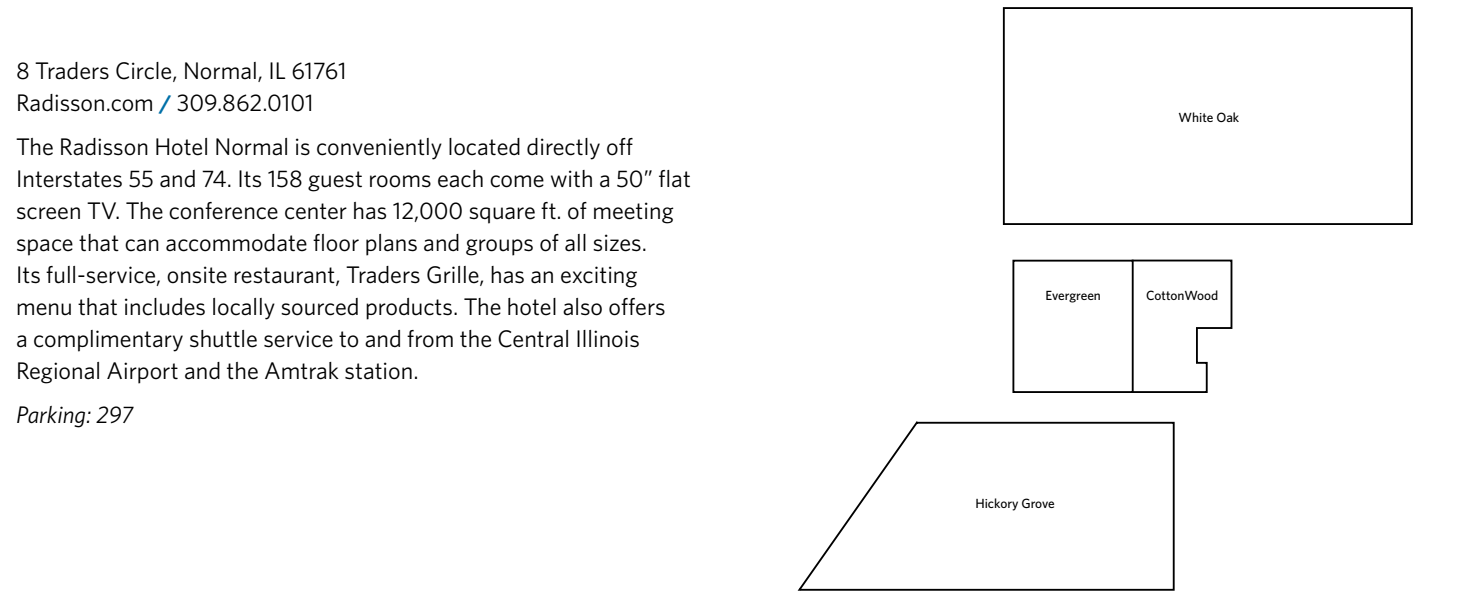
HOTEL NORMAL



8 Traders Circle, Normal, IL 61761
Radisson.com / 309.862.0101

The Radisson Hotel Normal is conveniently located directly off Interstates 55 and 74. Its 158 guest rooms each come with a 50” flat screen TV. The conference center has 12,000 square ft. of meeting space that can accommodate floor plans and groups of all sizes. Its full-service, onsite restaurant, Traders Grille, has an exciting menu that includes locally sourced products. The hotel also offers a complimentary shuttle service to and from the Central Illinois Regional Airport and the Amtrak station.

Parking: 297



	Ceiling Height	Dimensions (ft²)	Banquet	Theater	Classroom	U-Shape
White Oak	-	53' × 100' (5,480)	380	500	300	-
Hickory Grove	-	40' × 87' (3,160)	200	300	180	-
Evergreen	-	31' × 29' (780)	60	80	55	22
Cotton Wood	-	31' × 23' (445)	40	40	30	14



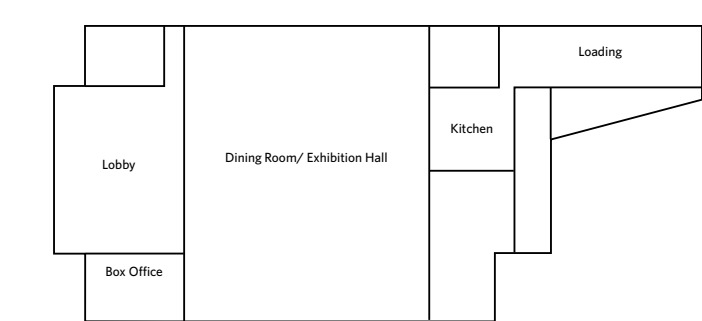
600 North East Street, Bloomington, IL 61701
ArtsBloom.org / 309.434.2777

The historic landmark Bloomington Center for the Performing Arts is the only fully equipped and staffed mid-sized theater in Bloomington-Normal. The BCPA features a new two-bay loading dock, new star and group dressing rooms, new rigging, lighting and sound systems, a full service ticket office and professional event and management staff to serve your needs – from presenting a solo artist to a full theatrical production. In addition to the auditorium, which provides seating for 1,200 people, the BCPA can accommodate large groups in their ballroom, which seats up to 1,400 people. Four additional breakout spaces are also available with a total seating capacity of up to 360 people.



BLOOMINGTON

CENTER FOR THE PERFORMING ARTS



	Ceiling Height	Dimensions (ft²)	Banquet	Theater	Classroom	U-Shape
Auditorium	-	2 levels	-	1,200	-	-
Ballroom	13.5'	82' × 142' (11,644)	1,100	1,400	400	-
Patron Lounge 118	13.5'	128' × 37' (1,036)	80	120	95	24
Patron Lounge 231	11.5'	22' × 28' (616)	48	60	32	24
Patron Lounge 266	11.5'	22' × 28' (616)	48	60	32	24
Patron Lounge 332	10'	22' × 28' (616)	48	60	32	24



GROSSINGER MOTORS ARENA

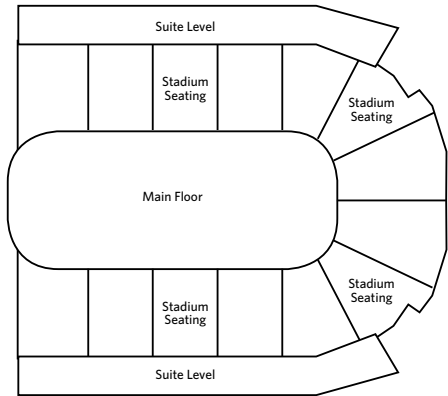


101 South Madison Street, Bloomington, IL 61701
GrossingerMotorsArena.com / 309.434.2843

The Grossinger Motors Arena, located in historic Downtown Bloomington, is a state-of-the-art multi-purpose recreation and entertainment facility. The Arena is a first-class, air-conditioned arena; designed specifically to meet the needs of all types of entertainment including major concerts, trade shows, conventions, sporting and civic events. The Arena can seat up to 8,000 for concerts and other special events. The theater set-up provides a more intimate experience, with full house curtaining to cut down the size of the seating area to 2,500 - 3,500. Make the Grossinger Motors Arena your entertainment destination!

The City of Bloomington's public ice facility, The Pepsi Ice Center, sits adjacent to the Arena and hosts ice skating lessons, hockey lessons, hockey leagues, Illinois State University hockey and more.

	Ceiling Height	Dimensions (ft²)	Banquet	Theater	Classroom	U-Shape
Grossinger Motors Arena	52'	3 levels	-	3,000-8,000	-	-
Main Floor	52'	200' × 85' (17,000)	600	1,500	-	-
Smokehouse Restaurant	10'	85' × 25'	60-80	75	65	35
Bud Light Lounge	9'-15'	180' × 25'	80-100	85	75	25
North Concourse	9'-15'	175' × 20'	60-75	50	50	25
Private Dining Room	8'	25' × 18'	25	40	30	20



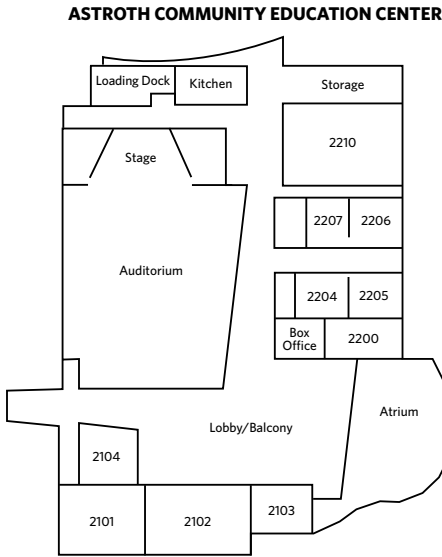
1500 West Raab Road, Normal, IL 61761
Heartland.edu / 309.268.8205

Heartland Community College's campus provides visitors with high-technology meeting spaces for a broad range of organizations and business activities. Available spaces range from a 434-seat auditorium to traditional classroom seating for up to 40 people, as well as more personal conference rooms that provide comfortable environments that encourage smaller group discussions. Assorted layouts can accommodate various events, and all rooms are equipped with leading-edge audio/visual and computer equipment. Campus catering also is available.

	Ceiling Height	Dimensions (ft²)	Banquet	Theater	Classroom	U-Shape
Auditorium	-	4,264	-	434	-	-
2100	-	476	-	-	12	-
2101	-	934	-	48	36	28
2102	-	974	-	48	48	36
2101/2102	-	1,908	-	96	96	-
2103	-	454	-	-	12	-
2200	-	438	-	-	12	-
2204	-	381	-	24	12	8
2205	-	456	-	-	12	-
2204/2205	-	837	-	48	24	16
2206	-	472	-	28	16	12
2207	-	331	-	-	12	-
2206/2207	-	803	-	48	24	16
2210	-	1,416	-	70	70	38



HEARTLAND COMMUNITY COLLEGE



INTERSTATE CENTER

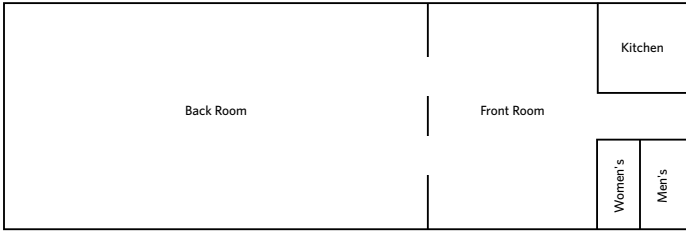


1106 Interstate Drive, Bloomington, IL 61705
McLeanCountyFair.org / 309.663.6497

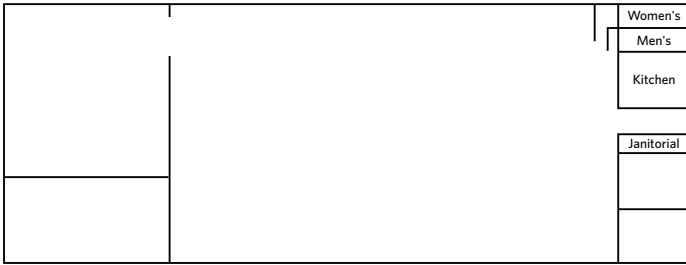
The Interstate Center is a 103 acre facility with two enclosed buildings and four clear span metal barns. They accommodate trade shows, wedding receptions, flea markets, dog shows, gaming conventions, fundraisers and more. The enclosed buildings can also be connected together by a tunnel to increase the size of any event and are air conditioned. The usable space for the enclosed buildings are 17,700 sq. ft. and 26,000 sq. ft., and the outdoor covered barns are each 20,000 sq. ft. A grandstand, dirt track and mobile sound stage are also available for outdoor events.

	Ceiling Height	Dimensions (ft²)	Banquet	Theater	Classroom	U-Shape
Mini Expo (Front Room)	13'-16'	4,580	160	500	110	-
Mini Expo (Back Room)	13'-16'	11,770	384	1,200	500	-
West Expo	16'-19'	21,760	900	2,400	1,200	-

MINI EXPO



WEST EXPO



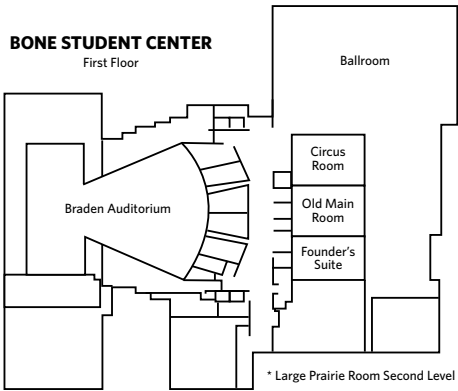
ILLINOIS STATE UNIVERSITY



ILLINOIS STATE UNIVERSITY
Illinois' first public university.

100 North University Street, Normal, IL 61761
BoneStudentCenter.IllinoisState.edu / 309.438.4636

Illinois State University's unique blend of facilities can accommodate groups from 10 to 10,000. ISU offers your organization state-of-the-art meeting rooms and auditoriums, classrooms equipped with advanced technology, quality food service, residence hall accommodations for up to 6,500 people, recreational facilities, business support services and a rich cultural environment.



	Ceiling Height	Dimensions (ft²)	Banquet	Theater	Classroom	U-Shape
Braden Auditorium	-	3 levels	-	3,457	-	-
Brown Ballroom	18'	(14,578)	640	1,100	650	-
Large Prairie Room (3 sections)	12'	(5,375)	210	400	320	-
Activity Room	12'	(4,440)	200	300	200	60
Old Main Room	10'	(3,700)	160	250	180	60
Circus Room	10'	(3,600)	152	200	140	40
Lounges (3 Total)	10'	-	64	80	48	32
Founder's Suite	10'	(1,730)	40	60	48	24
Spotlight Room	9'	(682)	-	-	-	-
Private Dining Room	9'	(294)	12	-	-	-
Alumni Center - Room 116	13'	51' x 44' (2,343)	128	216	126	33
Alumni Center - Room 117	10'	19' x 35' (680)	-	-	20	-
Alumni Center - Room 118	13'	44' x 66' (3,000)	184	324	168	36
Alumni Center - Room 119	10'	19' x 37' (721)	-	-	36	15
Great Hall	-	(2,770)	-	-	-	-
Carl E. Kasten Conference Rm	11'	19' x 33' (689)	-	-	-	28
Hancock Stadium 309.438.0080	11'	19' x 33' (689)	200	250	120	-
Redbird Arena 309.438.2000	100'	(37,422)	-	10,000	-	28



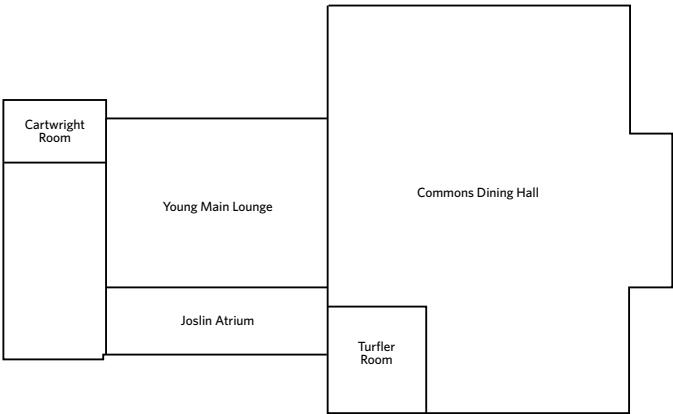
ILLINOIS WESLEYAN UNIVERSITY



104 East University Avenue, Bloomington, IL 61701
IWU.edu/Conferences / 309.556.3591

Illinois Wesleyan University’s beautiful campus, nestled in a quiet neighborhood just minutes from Downtown Bloomington and Uptown Normal, provides the ideal environment for events. With over 60 meeting spaces, a state-of-the-art recreation facility, full-service catering, housing accommodations, convenient parking, and ample green space, Illinois Wesleyan offers a wide variety of options for groups as small as eight and as large as 500.

	Ceiling Height	Dimensions (ft²)	Banquet	Theater	Classroom	U-Shape
Cartwright Room	10'9"	34' × 18' (612)	-	-	10	-
Commons Dining Hall	11'11"	126' × 83' (10,458)	500	-	175	-
Davidson Room	8'11"	31' × 51' (1,581)	64	80	60	30
Hansen Center Court	50'	62' × 39' (2,418)	176	393	100	42
Hansen Conference Room	9'	17' × 13' (221)	-	-	-	-
Hansen Room 200	8'	47' × 16' (752)	56	75	-	24
Henning Room	8'11"	29' × 31' (899)	32	50	15	24
Joslin Atrium	10'9"	29' × 88' (2,552)	128	196	70	40
Turfler Room	11'11"	38' × 42' (1,596)	96	-	-	-
Young Main Lounge	16'4"	65' × 83' (5,395)	225	374	180	60



ADDITIONAL HOTELS



1801 Eastland Drive, Bloomington, IL 61704
EastlandSuites.com / 309.662.0000

Eastland Suites Hotel & Conference Center offers 112 newly renovated guest rooms, 88 of which are completely furnished suites. Eastland Suites Hotel & Conference Center can accommodate groups of up to 300 people with over 3,200 square feet of flexible meeting space.

Parking: 218



	Ceiling Height	Dimensions (ft²)	Banquet	Theater	Classroom	U-Shape
Conference 1	10'	40' × 40' (1,600)	90	120	80	40
Conference 2	10'	20' × 40' (800)	60	60	40	20
Conference 3	10'	20' × 40' (800)	60	60	40	20
Ballroom	10'	80' × 40' (3,200)	250	300	150	70
Eastland Room	10'	18' × 27' (486)	40	40	15	20



320 South Towanda Avenue, Normal, IL 61761
HamptonInnNormal.com / 309.452.8900

If you’re looking to host a smaller event, the 128 room Hampton Inn & Suites can accommodate up to 48 people for a reception in their Adlai Stevenson I & II ballroom, and the adjacent Jesse Fell Boardroom is perfect for a small conference of up to twelve.

Parking: 100+



	Ceiling Height	Dimensions (ft²)	Banquet	Theater	Classroom	U-Shape
Adlai Stevenson (I & II)	10'	24' × 37' (888)	40	70	30	30
Adlai Stevenson (I or II)	10'	24' × 18.5' (444)	20	35	15	15
Jesse Fell Boardroom	10'	Seating for 10, conference style				

ADDITIONAL HOTELS



1 Lyon Court, Bloomington, IL 61701
HotelBloomington.com / 309.829.8111

Each of Hawthorn Suites by Wyndham's 73 suites contains a sofa bed, kitchenette, refrigerator and microwave. Additional amenities include a hot breakfast buffet, high-speed internet access, a heated indoor pool, 24-hour fitness center and a lobby bistro.

Parking: 155



200 Broadway Avenue, Normal, IL 61761
BloomingtonNormal.Place.Hyatt.com / 309.454.9288

Hyatt Place is centrally positioned in vibrant Uptown Normal. This 114 room hotel is adjacent to Uptown Station's various public transportation services. Nearby attractions include Illinois State University and the Historic Normal Theater. Check out the hotel's rooftop dining and Starbucks!

Parking: 114



	Ceiling Height	Dimensions (ft²)	Banquet	Theater	Classroom	U-Shape
Ballroom	10'	39' × 75' (2,925)	175	250	200	135
Aspen	10'	39' × 21' (819)	50	75	55	25
Birch	10'	39' × 39' (1,521)	75	175	100	50
Chestnut	10'	39' × 20' (780)	50	75	50	25
Boardroom	10'	17' × 17' (289)	-	24	24	24

	Ceiling Height	Dimensions (ft²)	Banquet	Theater	Classroom	U-Shape
Meeting Place 1	-	39' x 24' (1,075)	78	90	32	26
Meeting Place 2	-	17' x 24' (420)	32	45	18	12
Meeting Place 1 & 2	-	56' x 24' (1,495)	112	150	56	38



1715 Parkway Plaza, Normal, IL 61761
HIExpress.com / 309.862.1600

The Holiday Inn Express & Suites offers suites, an executive boardroom and more than 3,000 square feet of meeting space that can accommodate up to 90 people for a banquet. Each of the 86 guest rooms includes a 42" flat screen television, free high speed wireless internet, mini-fridge and microwave.

Parking: 121



	Ceiling Height	Dimensions (ft²)	Banquet	Theater	Classroom	U-Shape
Florentine Ballroom	10'	30' × 100' (3,000)	90	100	90	60
Florentine I	10'	15' x 50' (1,500)	30	50	30	25
Florentine II	10'	15' x 50' (1,500)	30	50	30	25
Library	10'	15' × 25' (400)	50	50	40	40

ADDITIONAL FACILITIES

	Address	Phone Number	Website	Seats up to
Bloomington Public Library	205 East Olive Street, Bloomington, IL 61701	309.828.6091	BloomingtonLibrary.org	200
Broadview Mansion	1301 South Fell Avenue, Normal IL 61761	309.452.6710	IBFoundation.org	50
The Den at Fox Creek	3002 Fox Creek Road, Bloomington, IL 61705	309.434.2317	TheDenGC.com	130
Epiphany Farms	220 East Front Street, Bloomington, IL 61701	309.828.2323	EpiphanyFarms.com	160
Ewing Cultural Center	48 Sunset Road, Bloomington, IL 61701	309.438.6333	EwingManor.IllinoisState.edu	75
Ironwood Golf Course	1901 North Towanda Avenue, Normal, IL 61761	309.454.9620	GolfIronwood.org	100
McLean County Museum of History	200 North Main Street, Bloomington, IL 61701	309.827.0428	McHistory.org	110
Miller Park Pavilion	1020 South Morris Avenue, Bloomington, IL 61701	309.434.2260	CityBlm.org	350
Miller Park Zoo	1020 South Morris, Bloomington, IL 61701	309.434.2250	MillerParkZoo.org	90
Normal Theater	209 West North Street, Normal, IL 61761	309.454.9722	NormalTheater.com	385
Prairie Vista Golf Course	502 West Hamilton Road, Bloomington, IL 61704	309.434.2317	PrairieVistaGC.com	100
Reality on Monroe	111 East Monroe Street, Bloomington, IL 61701	309.556.0867	-	150
Vrooman Mansion	701 East Taylor Street, Bloomington, IL 61701	309.828.8816	VroomanMansion.com	50



SPORTS



WELCOME TO
BLOOMINGTON-NORMAL



YOUR DESTINATION FOR SPORTS!

Bloomington-Normal offers excellent facilities, accessibility and services at an affordable cost. Centrally located along Interstates 55, 74 and 39, Bloomington-Normal is the premier destination for your event.

The professional staff members of the Bloomington-Normal Area Convention & Visitors Bureau are ready to assist you from site selection through post-event follow-up to ensure a successful event. We hope you will visit us soon, and let our premier location, facilities and affordability increase attendance at your next meeting.

DRIVING HOURS TO BLOOMINGTON-NORMAL

ILLINOIS

- Carbondale / 4
- Champaign-Urbana / .75
- Chicago / 2
- Decatur / .75
- Peoria / .5
- Quad Cities / 2.5
- Rockford / 2
- Springfield / 1

MIDWEST

- Cincinnati, OH / 4.5
- Cleveland, OH / 7.5
- Des Moines, IA / 4.5
- Detroit, MI / 6.5
- Indianapolis, IN / 2.5
- Kansas City, MO / 6
- Milwaukee, WI / 3.5
- Minneapolis, MN / 7.5
- Nashville, TN / 6.5
- St. Louis, MO / 2.5

CONTENTS

Group Services	2
Sports Facilities Overview	3
Illinois State University	4-5
Illinois Wesleyan University	6-7
City of Bloomington	8
Town of Normal	9
Grossinger Motors Arena	10
Other Facilities	11
Golf Courses	12-13

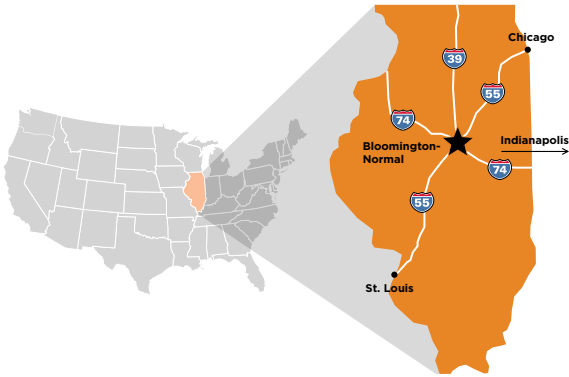


Bloomington-Normal Area Convention and Visitors Bureau
3201 CIRA Drive, Suite 201, Bloomington, IL 61704
inside the Central Illinois Regional Airport

800.433.8226 • 309.665.0033 • VisitBN.org

Published by the BNACVB. The information in this guide was current at the time of publication. The BNACVB assumes no responsibility for errors, changes or omissions and reserves the right to edit any listing for content and/or length. Maps and diagrams are not to scale.

© 2019 BNACVB. All rights reserved. January 2019—200



BLOOMINGTON-NORMAL

is located in the heart of Illinois and the Midwest. 2 hours from Chicago and 2.5 hours from St. Louis and Indianapolis, our city is easy to access by air, rail, and through the intersection of Interstates 39, 55, 74 and Route 66.



GROUP SERVICES

The Bloomington-Normal Area Convention and Visitors Bureau is a full-service bureau, offering a number of site selection, pre-event and on-site services.

SITE SELECTION

- Provide list of available venues and floor plans
- Assist with site visits and inspections

LOGISTICAL SUPPORT

- Assist with scheduling meetings, transportation logistics, emergency medical services, securing permits and local law enforcement coordination
- Provide contacts for sponsorship solicitation

VENDOR ASSISTANCE

- Provide access to proven event service partners

HOTEL ACCOMMODATIONS

- Work with hotels to fulfill your overnight requirements
- Track hotel room nights

VOLUNTEER RECRUITMENT

- Provide a connection to a network of experienced event volunteers

WELCOME SERVICES

- Provide guest services including visitor guides, maps and coupons
- Secure welcome letters from local municipal officials
- Assist in scheduling local municipal officials to welcome attendees

PUBLICITY

- Provide contact information for local media outlets
- Write and distribute a press release
- Promotion through social media, online calendar, radio spots and newsletter

BID PROCESS

- Serve as a resource for bid development or event management
- Assemble bid team and/or local organizing committee

EVENT CREATION

- Assist in creating or developing a new sporting event



SPORTS FACILITIES OVERVIEW

	City of Bloomington	Grossinger Motors Arena	Town of Normal	The Corn Crib	ISU	IWU	Game Time Gym	Central Catholic	District 87	Unit 5	Comlara Park	Moraine View
Archery	🏹	🏹	🏹	🏹	🏹	🏹	🏹	-	-	-	🏹	-
Baseball	⚾	-	⚾	⚾	⚾	⚾	-	-	⚾	⚾	-	-
Basketball	🏀	🏀	🏀	-	🏀	🏀	🏀	🏀	🏀	🏀	-	-
Bicycling	🚲	-	🚲	-	-	-	-	-	-	-	🚲	-
Billiards	-	-	-	-	🎱	-	-	-	-	-	-	-
Bowling	🎳	-	🎳	-	🎳	-	-	-	-	-	-	-
BMX	-	🚴	-	-	-	-	-	-	-	-	-	-
Boxing	-	🥊	-	-	-	-	-	-	-	-	-	-
Cheer/Dance	-	👯	-	-	👯	👯	-	👯	👯	👯	-	-
Cross Country	🏃	-	🏃	-	🏃	-	-	-	-	-	🏃	-
Fishing	🎣	-	-	-	-	-	-	-	-	-	🎣	🎣
Football/Rugby	🏈	🏈	🏈	-	🏈	🏈	-	🏈	🏈	🏈	-	-
Gymnastics	-	🤸	-	-	🤸	🤸	🤸	-	-	-	-	-
Golf	🏌	-	🏌	-	🏌	-	-	-	-	-	-	-
Ice Hockey	🏒	🏒	-	-	-	-	-	-	-	-	-	-
Ice Skating	🛼	🛼	-	-	-	-	-	-	-	-	-	-
Martial Arts	-	🥋	-	-	🥋	🥋	🥋	-	-	-	-	-
Motorsports	-	⚙️	-	-	-	-	-	-	-	-	-	-
Rodeo	-	🤠	-	-	-	-	-	-	-	-	-	-
Soccer	⚽	-	⚽	⚽	⚽	⚽	⚽	-	⚽	⚽	-	-
Softball	⚾	-	⚾	⚾	⚾	⚾	-	-	⚾	⚾	-	-
Swimming	🏊	-	🏊	-	🏊	🏊	-	-	🏊	🏊	🏊	🏊
Tennis	🎾	-	🎾	-	🎾	🎾	-	-	🎾	🎾	-	-
Track & Field	-	-	-	-	🏃	🏃	-	🏃	🏃	🏃	-	-
Volleyball	🏐	🏐	🏐	-	🏐	🏐	🏐	🏐	🏐	🏐	-	-
Wrestling	🤼	🤼	🤼	-	🤼	🤼	-	-	🤼	🤼	-	-



ILLINOIS STATE UNIVERSITY



GoRedbirds.com / 309.438.2000

Illinois State University was founded in 1857 as the first public university in the state and has a longstanding tradition of athletic excellence. Other athletic facilities on the campus of ISU include Horton Pool; Karin Bone Athletic Study Center; the Kaufman Football Building; McCormick Courts, boasting 12 lighted tennis courts; Owen Strength and Conditioning Center; an outdoor track facility and the Weibring Golf Club.



ADELAIDE STREET FIELD

Gregory & Adelaide, Normal, IL 61790

GoRedbirds.com / 309.438.2000

Adelaide Street Soccer Field is located on the campus of Illinois State University, at the corner of Gregory and Adelaide Streets, about three miles south of Interstate 55. This soccer facility features a natural grass playing field and a press box that is radio wired. Located at the west edge of the Redbird Sports Complex, it features all the comforts necessary for playing, coaching, watching or covering top-notch soccer.

- Seating: 500+ • Parking: 500+ • Lighting: no
- Locker Rooms: no

DUFFY BASS FIELD

Gregory & Adelaide, Normal, IL 61790

GoRedbirds.com / 309.438.2000

Duffy Bass Field is encompassed by an exceptional facility built with fans, players and members of the media in mind. The facility includes a gated baseball complex with seating for over 1,000 spectators, restrooms, concessions, team dugouts and a state-of-the-art press box, among other amenities.

- Seating: 500+ • Parking: 500+ • Lighting: yes
- Locker Rooms: no

ISU BOWLING AND BILLIARDS CENTER

209 North School Street, Normal, IL 61761

BoneStudentCenter.IllinoisState.edu / 309.438.2555

The ISU Bowling and Billiards Center is located next to the Bone Student Center. It has 10 bowling lanes, 15 tables and two larger tables for games.

- Parking: 385 • Concessions: no



HANCOCK STADIUM

College & Main, Normal, IL 61790

GoRedbirds.com / 309.438.2000

Hancock Stadium is located on the campus of Illinois State University, at the corner of College Avenue and Main Street. It features a collegiate-size, fully lighted, artificial turf playing field; three concession stands, a box office, security, ushering service and two scoreboards. New renovations include a 5,500 square foot indoor club which offers accessibility to suite and club seat holders, glassed-in views of the field at the 50-yard line, and open, plush seating in the large common lounge. Additional space includes a complete media press box. Hancock Stadium can be used for football, soccer, lacrosse and band competition.

Major Events Hosted: NCAA Division I-AA Playoffs, Special Olympics Illinois Summer Games

- Seating: 15,000 • Parking: 4,000 • Lighting: yes
- Locker Rooms: 2 full team

HORTON FIELDHOUSE

Gregory & Adelaide, Normal, IL 61790

GoRedbirds.com / 309.438.2000

Horton Fieldhouse is located at the Illinois State University Redbird Sports Complex, on the corner of Gregory and Adelaide Streets. This multi-use facility can accommodate track & field, gymnastics, basketball, volleyball, swimming, softball, baseball, football, soccer and has an indoor golf practice facility. Horton Fieldhouse also offers a Super X Mondo® floor, a six-lane 200-meter track with full field event facilities, a six-lane pool (80' x 80') and much more.

- Seating: 2,480 • Parking: 1,150 • Lighting: indoor
- Locker Rooms: 7 (capacity 450)



MARIAN KNEER SOFTBALL STADIUM

Gregory & Adelaide, Normal, IL 61790

GoRedbirds.com / 309.438.2000

The Marian Kneer Softball Stadium is located at the Illinois State University Redbird Sports Complex, on the corner of Gregory and Adelaide Streets. The facility offers a natural grass playing field with dimensions of 190' to left, 210' to center and 190' to right. The field also offers a radio wired press box with fax and phone.

- Seating: 500 • Parking: 350 • Lighting: yes
- Locker Rooms: no

REDBIRD ARENA

College & Main, Normal, IL 61790

GoRedbirds.com / 309.438.2000

Redbird Arena is located on the campus of Illinois State University, at the corner of College Avenue and Main Street. The arena can be utilized for basketball, volleyball and cheerleading. The handicap accessible arena features security, ushering service, wiring for television and radio, catering service, a suspended scoreboard and an ATM. Additional space includes administrative offices, a strength and conditioning center, media room and hospitality rooms.

Major Events Hosted: NCAA Women's Basketball Midwest Regional, IHSA Girls Basketball and Volleyball State Championships, State Farm Holiday Classic, Missouri Valley Conference Women's Basketball Tournament

- Seating: 10,200 • Parking: 4,000 • Lighting: indoor
- Locker Rooms: 8 full team



ILLINOIS WESLEYAN UNIVERSITY



IWUSports.com / 309.556.3196

Illinois Wesleyan University was founded in 1850 as “Illinois University” and has a rich history of academic and athletic distinction. Other athletic facilities on the campus of IWU include the Beadles-Morse Tennis Courts, which boasts 8 lighted tennis courts; and the Shirk Center Fitness Center, which includes three racquetball courts, a weight/exercise room with cardiovascular and exercise equipment and free weights.



SHIRK CENTER

302 East Emerson Street, Bloomington, IL 61701
IWUSports.com / 309.556.3196

The Shirk Center is a multi-purpose athletic, recreation and wellness complex located on the campus of Illinois Wesleyan University. It contains facilities for basketball, volleyball, track, tennis and wrestling; with a seating capacity of 2,400 and standing room for another 400 spectators. The Activity Center includes a 200-meter six-lane indoor track with full facilities, 2 batting cages and 4 courts for tennis, basketball, volleyball and badminton. The Fitness Center includes 3 racquetball courts and an exercise room with cardiovascular and exercise equipment and free weights. The Shirk Center also houses facilities for golf and baseball/softball infield practice.

Major Events Hosted: NCAA Division III Indoor Track, Volleyball, and Womens Basketball National Championships, NCAA Division III Mens Basketball Tournament Games, Midwest Nationals Wrestling Tournament, State Farm Holiday Classic

- Seating: 2,400 • Parking: 750 • Lighting: indoor
- Locker Rooms: 7 (capacity 400)

FORT NATATORIUM

302 East Emerson Street, Bloomington, IL 61701
IWUSports.com / 309.556.3196

Fort Natatorium is housed inside the Shirk Center. Fort Natatorium contains an 8 lane, 25 yard by 6 lane, 25 meter swimming pool. The pool is equipped with 1 meter and 3 meter diving boards, waveless gutters, a full Colorado VI® timing system and 11-line scoreboard.

- Seating: 300 • Parking: 750 • Lighting: indoor
- Locker Rooms: 2 (capacity 100)



NEIS SOCCER FIELD

North Franklin Street, Bloomington, IL 61701
IWUSports.com / 309.556.3196

Neis Soccer Field is located just off of East Street on the campus of Illinois Wesleyan University. This natural grass field, with dimensions of 75' x 120', is home to the Titan soccer teams. Locker room facilities for Neis Soccer Field are located inside the Shirk Center.

- Seating: 300 • Parking: 750 • Lighting: yes
- Locker Rooms: 7 (capacity 400)

TUCCI STADIUM

300 East Kelsey Street, Bloomington, IL 61701
IWUSports.com / 309.556.3196

Wilder Field at Tucci Stadium, located on the north edge of campus, has been the site of athletic contests for over a century. Along with the football field, Tucci Stadium has full track and field facilities including an 8-lane 400-meter track and a practice field for hammer, shot, discus and javelin. Additional locker room facilities are located directly behind the stadium in the Shirk Center. Wilder Football Field, home to the Illinois Wesleyan University Titans, is the 5th oldest college field in the nation.

Major Events Hosted: NCAA Division III Football Playoffs, AAU Regional Track and Field Meet, Illinois High School Shrine Game

- Seating: 3,500 • Parking: 750 • Lighting: yes
- Locker Rooms: 2 full team



JACK HORENBERGER FIELD

1611 North Franklin Avenue, Bloomington, IL 61701
IWUSports.com / 309.556.3196

Jack Horenberger Field is located just off of Franklin Avenue on the campus of Illinois Wesleyan University. The baseball field features a tiered grandstand with seating for over 350, home and visiting team dugouts, natural grass playing field, 10-inch sand base in the grassy area, batting cage and picnic area. Field dimensions are 325' to left, 355' to left center, 390' to center, 365' to right center and 315' to right.

Major Events Hosted: NCAA Division III Baseball Regional Tournament, IHSA Baseball Regional and Sectional Games

- Seating: 500+ • Parking: 750 • Lighting: yes
- Locker Rooms: 7 (capacity 400)

WESLEYAN SOFTBALL FIELD

1609 North Franklin Avenue, Bloomington, IL 61701
IWUSports.com / 309.556.3196

The Illinois Wesleyan Softball Field sits adjacent to Wilder Field on campus. It features home and visiting team dugouts, a natural grass playing field and a special clay-sand mixture that promotes drying. Field dimensions are 200' to left, center and right fields. Locker room facilities are located inside the Shirk Center.

Major Events Hosted: NCAA Division III Softball Regional Tournament, IHSA Softball State Tournament Games

- Seating: 300 • Parking: 750 • Lighting: yes
- Locker Rooms: 7 (capacity 400)



BLOOMINGTON

PARKS & RECREATION DEPT.



CITY OF BLOOMINGTON

115 East Washington Street, Bloomington, IL 61701
BPARD.org / 309.434.2260

The Bloomington Parks, Recreation and Cultural Arts Department maintains over 1,100 acres of land including 39 park sites and three golf courses. Facilities include a zoo, two outdoor swimming pools, five fishing lakes, a boating concession, 26 outdoor tennis courts (20 lighted), 21 baseball diamonds, four football fields, two disc golf courses, a mobile stage, an outdoor bandstand, five multi-purpose recreation facilities, six nature parks, a miniature golf course, soccer fields and 24 miles of bicycle trail.

The Bloomington Parks and Recreation Department offers numerous facilities including Miller Park, featuring a softball field and bandstand; White Oak Park, featuring football, soccer and softball fields; O'Neil Park and baseball fields with a basketball court, three lighted tennis courts and a pool; and McGraw Park with two baseball fields and six lighted tennis courts.

Facility Uses: Basketball, volleyball, soccer, softball, baseball, running, biking, rollerblading, swimming, tennis, golf and ice hockey.

Additional Facilities: Miller Park Zoo, Lincoln Leisure Center, the Den at Fox Creek, Prairie Vista Golf Course and Highland Park Golf Course.



PEPSI ICE CENTER

201 South Roosevelt Avenue, Bloomington, IL 61701
BPARD.org / 309.434.2737

The Pepsi Ice Center is an indoor skating facility with a 200' x 85' sheet of ice. The Ice Center is owned and operated by the Bloomington Parks and Recreation Department and, in addition to providing the Bloomington-Normal area with a public indoor skating facility and skating lessons, is home to the Bloomington Jr. Youth Hockey League and an adult hockey league. Both leagues are sanctioned by USA Hockey. The Pepsi Ice Center also offers a special practice time set aside for figure skaters only, as well as curling and broomball for those who wish to participate in non-skating activities. The Pepsi Ice Center is the perfect spot to fulfill the needs of any level skater or hockey player.

Major Events Hosted: Bloomington Jr. Thunder Youth Hockey League Games, ISU Redbirds Club Hockey League Games

- Seating: 200 • Parking: 275 • Lighting: indoor
- Locker Rooms: 4



CHAMPION FIELDS

300 Maxwell Park, Normal, IL 61761
Softball.Normal.org / 309.454.9540

The Champion Fields complex at Maxwell Park is located in west Normal at the intersection of Parkside and Gregory Streets. The softball complex features 10 lighted fields that are divided into three areas, each of which includes a concession stand and restrooms. The east end, where the Normal Parks and Recreation Department slow pitch leagues are held, is comprised of four fields with 300' fences and a press box. The west end is comprised of four fields with 225' fences and is home to youth fast pitch leagues and weekend tournaments. The south end, which can accommodate slow pitch as well as fast pitch games, is comprised of two fields with 275' fences and a press box.

Major Events Hosted: USA Softball National Championships, NJCAA Division II Softball National Championships, USA Olympic Softball Exhibition Games, IESA Softball State Finals

- Seating: 2,300 • Parking: 650 • Lighting: yes
- Locker Rooms: no



NORMAL

PARKS & RECREATION DEPT.



100 East Phoenix Street, Normal, IL 61761
Normal.org / 309.454.9540

The Normal Parks and Recreation Department is responsible for the care of over 400 acres of park land, 3.5 miles of linear green space along the Constitution Trail, two pools, numerous softball fields, tennis courts and several playground sites. In addition, they provide support to a wide range of recreation programs provided by the Town of Normal. Other facilities available for rental include the Normal Theater, Ironwood Golf Course and a Community Activity Center.

The Normal Parks and Recreation Department offers several facilities throughout Normal including Anderson Park & Aquatic Center, Fairview Family Aquatic Center, Champion Fields and 13 miles of the Constitution Trail, a hard-surface, running/biking/rollerblading trail that spans Bloomington-Normal.

Facility Uses: Basketball, volleyball, soccer, softball, baseball, running, biking, rollerblading, swimming, tennis, golf and inline hockey.

Additional Facilities: 17 lighted tennis courts, 12-pit lighted horseshoe court, the Children's Discovery Museum, Connie Link outdoor theater, Maxwell Dog Park, Maxwell Disc Golf Course and Ironwood Golf Course.

GROSSINGER MOTORS ARENA



101 South Madison Street, Bloomington, IL 61701
GrossingerMotorsArena.com / 309.434.2843

The Grossinger Motors Arena, located in historic Downtown Bloomington, is a state-of-the-art multi-purpose recreation and entertainment facility. The Arena is a first-class, air-conditioned community and family center; designed specifically to meet the needs of all types of entertainment including major concerts, trade shows, conventions, sporting and civic events. The Arena can seat up to 8,000 for concerts and other special events. The theater set-up provides a more intimate experience, with full house curtaining to cut down the size of the seating area to 2,500 - 3,500. The Grossinger Motors Arena is also home to three professional sports teams.

The City of Bloomington's public ice facility, The Pepsi Ice Center, sits adjacent to the Grossinger Motors Arena and hosts ice skating lessons, hockey lessons, hockey leagues, Illinois State University hockey, curling leagues, and more.



MAJOR EVENTS HOSTED

Indoor Football League All-Star Game, IHSA Competitive Cheerleading State Finals, IHSA Competitive Dance State Finals, IHSA Dual Team Wrestling State Finals

- Seating: 8,000 • Parking: 2,395 • Lighting: indoor
- Locker Rooms: 4 full team



BLOOMINGTON TENNIS CENTER

4101 Wicker Road, Bloomington, IL 61704
BloomingtonTennisCenter.com / 309.808.6996

The Bloomington Tennis Center has the only 36' court in Central Illinois for ages three through eight to train on. It has six indoor courts and one mini court. All courts have LED lighting.

- Parking: 50 • Lighting: yes • Locker Rooms: no • Concessions: yes

COMLARA PARK

13001 Recreation Area Drive, Hudson, IL 61748
McLeanCountyIL.gov/parks / 309.434.6770

Comlara Park is a large nature recreation spot for water sports, biking, hunting & picnicking with numerous campsites.

COMMUNITY SOCCER FIELDS

Ireland Grove & Towanda Barnes, Bloomington, IL 61704
IllinoisFusion.com / 309.451.GOAL

The Community Soccer Fields complex offers 20 soccer fields of various sizes used annually by 2,000 area soccer players.

Major Events Hosted: Illinois Fusion Spring Shootout

- Parking: yes • Lighting: yes • Locker Rooms: no

THE CORN CRIB

1000 West Raab Road, Normal, IL 61761
NormalBaseball.com / 309.454.2255

This Corn Crib seats just over 4,000 in actual seats, and many more on the lawn. It features 10 luxury suites, four concession stands, a sound system, an LED video board and a SPRINTURF playing surface.

Major Events Hosted: IHSA Boys Soccer State Finals, Frontier League All-Star Game

- Seating: 4,200+ • Parking: 1,200 • Lighting: yes • Locker Rooms: 4

DARNALL'S GUN WORKS AND RANGES

6125 County Road 1175 North, Bloomington, IL 61705
Darnalls.com / 309.379.4331

Darnall's provides a place for Trap, Skeet, Sporting Clay and Indoor and Outdoor Pistol and Rifle Shooting.

EVERGREEN RACQUET CLUB

3203 East Washington Street, Bloomington, IL 61704
ERCtennis.com / 309.662.4361

This tennis center has eight indoor lighted courts and four outdoor courts. It also features a racquetball court and four pickleball courts.

- Parking: 70 • Lighting: Indoors • Locker Rooms: yes • Concessions: no

OTHER FACILITIES

GAME TIME GYM II

404 Olympia Drive, Bloomington, IL 61704
GameTimeGym.com / 309.662.9520

Game Time Gym II is home to the Game Time Gym Sports League. This multi-use, indoor facility can be utilized for soccer, basketball, volleyball, flag football and indoor practice for various other sports.

Major Events Hosted: American Youth Basketball TOUR

- Seating: 200+ • Parking: 100+ • Lighting: indoor
- Locker Rooms: 2 full team

McLEAN COUNTY PONY FIELDS AT THE SHIRA BASEBALL COMPLEX

3707 Ireland Grove Road, Bloomington, IL 61704
McPonyBaseball.com / 309.662.7669

The Shira Baseball Complex consists of six fields of various size (four with lights) and a concession stand to accommodate players ages 5-19. It is home to all McLean County PONY Baseball League Games.

- Parking: 150 • Lighting: yes • Locker Rooms: no

NORD FIELDS

Rabbit Hill Road at East 1200 North Road, Bloomington, IL 61705
ReignSoccer.com

Nord Fields features 4 full-sized and 5 small-sized soccer fields that accommodate all Central Illinois Soccer league play. The Nord Fields are also home to the Midwest Reign Soccer Club. No permanent seating is available.

- Parking: 300 • Lighting: yes • Locker Rooms: no

PHEASANT LANES FAMILY FUN CENTER

804 North Hershey Road, Bloomington, IL 61704
PheasantLanes.com / 309.663.8556

Pheasant Lanes Family Fun Center has 32 bowling lanes and offers open bowling, league bowling, tournaments, birthday parties, and corporate parties. During the spring, summer and fall seasons they also offer a professionally designed 18-hole miniature golf course and two sand volleyball courts.

- Parking: 200 • Lighting: yes • Concessions: yes



GOLF COURSES



THE DEN AT FOX CREEK

3002 Fox Creek Road
Bloomington, IL 61704
TheDenGC.com
309.434.2300

Holes	PAR	Course Yardage	Cart Rental	Driving Range	Pro Shop/ Club Rental
18	72	6,926			
This Arnold Palmer Signature Golf Course features bentgrass tees, greens and fairways that complement the wild prairie grasses that group in the rough. The picturesque Scottish Links Style golf course features 131 strategically placed sand traps, and water hazards on 9 of the 18 holes.					

HAZY HILLS GOLF COURSE

25258 North 1350 East Road
Hudson, IL 61748
309.726.9200

9	35	2,900		-	
The nine-hole course at the Hazy Hills Golf Course in Hudson was designed by Ben Gildersleeve. The design of the holes, rolling terrain and pond gives this course character and charm.					

HIGHLAND PARK GOLF COURSE

1613 South Main Street
Bloomington, IL 61701
HighlandParkGC.com
309.434.2200

18	70	5,539		-	
This course offers narrow fairways lined by old, mature trees and small greens which make for a challenging round. A hilly terrain and beautiful, meandering creek create a very scenic golf course.					

INDIAN SPRINGS GOLF CLUB

36846 East Comanche Drive
Saybrook, IL 61770
309.475.4111

9	36	3,180			
This course features a challenging, tree-lined layout with two sets of tees. The practice facilities include an oversized putting green with a side bunker and a full length driving range. Outings, playdays and banquets are welcome but must be scheduled in advance.					

IRONWOOD GOLF COURSE

1901 Towanda Avenue
Normal, IL 61761
GolfIronwood.org
309.454.9620

18	72	7,100			
Designed by highly regarded golf course designer Roger Packard, the Ironwood Golf Course meanders through the Ironwood residential subdivision. Course features include a grass tee driving range, large practice putting green, practice bunker and instruction for golfers of all ages at the Golf Academy at Ironwood.					

LE ROY COUNTRY CLUB

27307 US-150
Le Roy, IL 61752
LeroyCountryClub.net
309.962.3421

Holes	PAR	Course Yardage	Cart Rental	Driving Range	Pro Shop/ Club Rental
9	71	5681		-	-
Le Roy Country Club, with its abundance of mature trees, a winding creek, and unique tilted petite greens, is one of the finest and most challenging 9-hole golf courses in Central Illinois. You will find the rates offer more value and are priced less that any other course in the area.					

THE LINKS AT IRELAND GROVE

3807 Ballybunion Road
Bloomington, IL 61704
TheLinksAtIrelandGrove.com
309.661.8040

9	30	1,590			-
In addition to the nine-hole course, The Links at Ireland Grove offers a range with weather protected hitting bays, over an acre of target greens, several bunkers, two fairways, nearly two acres of natural grass hitting area and rental clubs.					

PRAIRIE VISTA GOLF COURSE

502 West Hamilton Road
Bloomington, IL 61704
PrairieVistaGC.com
309.434.2217

18	72	6,745			
This American Contemporary Style course, designed by Roger Packard, features bentgrass tees, greens, fairways and water hazards on 16 of the 18 holes. Other amenities include a large practice putting green, large practice chipping green and a grass driving range.					



WEIBRING GOLF CLUB AT ISU

800 West Gregory Street
Normal, IL 61790
ISUGolf.com
309.438.8065

18	71	6,915		-	
Weibring Golf Club features 18 rebuilt greens and two practice greens, bentgrass tees and fairways, Bunker Guard erosion control and tour-quality Best Sand. This course accommodates approximately 28,000 rounds per year and hosts more than 100 tournaments and outings.					

THE GOLF LEARNING CENTER

1304 Cross Creek Drive
Normal, IL 61761
AllSeasonsGLC.com

-					
Named one of Golf Range Magazine's Top 100 Ranges in America, the center offers both indoor and outdoor facilities, a full flight driving range, 35 heated hitting bays and two heated teaching bays. Lessons and a Full Swing Indoor Golf Simulator are available.					



TOURS



WELCOME TO
BLOOMINGTON-NORMAL



YOUR DESTINATION FOR MEETINGS AND CONVENTIONS!

Bloomington-Normal offers excellent facilities, accessibility and services at an affordable cost. Centrally located along Interstates 55, 74 and 39, Bloomington-Normal is your premier meeting destination.

The professional staff members of the Bloomington-Normal Area Convention & Visitors Bureau are ready to assist you from site selection through post-convention follow-up to ensure a successful event. We hope you will visit us soon and let our premier location, facilities and affordability increase attendance at your next meeting.

DRIVING HOURS TO BLOOMINGTON-NORMAL

ILLINOIS

- Carbondale / 4
- Champaign-Urbana / .75
- Chicago / 2
- Decatur / 1
- Peoria / .75
- Quad Cities / 2.5
- Rockford / 2
- Springfield / 1

MIDWEST

- Cincinnati, OH / 4.5
- Cleveland, OH / 7.5
- Des Moines, IA / 4.5
- Detroit, MI / 6.5
- Indianapolis, IN / 2.5
- Kansas City, MO / 6
- Milwaukee, WI / 3.5
- Minneapolis, MN / 7.5
- Nashville, TN / 6.5
- St. Louis, MO / 2.5

CONTENTS

Group Services2

Tour Options3-6

Major Events7

Restaurants8-9

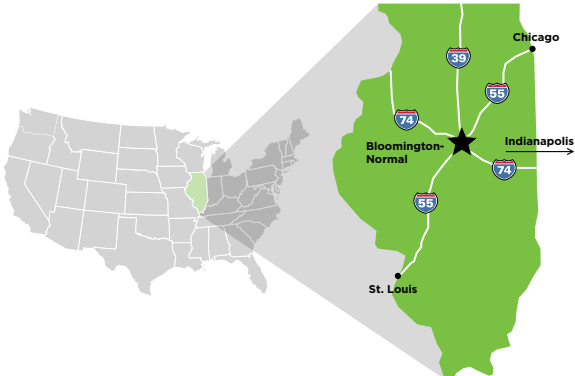


Bloomington-Normal Area Convention and Visitors Bureau
3201 CIRA Drive, Suite 201, Bloomington, IL 61704
inside the Central Illinois Regional Airport

800.433.8226 • 309.665.0033 • VisitBN.org

Published by the BNACVB. The information in this guide was current at the time of publication. The BNACVB assumes no responsibility for errors, changes or omissions and reserves the right to edit any listing for content and/or length. Maps and diagrams are not to scale.

© 2019 BNACVB. All rights reserved. January 2019—160



BLOOMINGTON-NORMAL

is located in the heart of Illinois. 2 hours from Chicago and 2.5 hours from St. Louis and Indianapolis, our city is easy to access by air, rail, and through the intersection of Interstates 39, 55, 74 and Route 66.



GROUP SERVICES



TOUR OPTIONS

The Bloomington-Normal Area Convention and Visitors Bureau is a full-service bureau, offering a number of site selection, pre-event and on-site services.

SITE SELECTION / PLANNING ASSISTANCE

Our staff will research rates and availability of local facilities/hotels for your event. We are happy to coordinate tours of any facility.

NEWS RELEASE

Our area prides itself on the events we host. At your direction, we will develop and submit a news release to all local media detailing your event. Information for the news release is required at least two weeks prior to your event.

LITERATURE / MAPS

Please let us know if you would like any information on the Bloomington-Normal area for your participants. We can provide you with visitor guides, various brochures or tear-off maps. We can also customize an information sheet for your website or mailing.

COUPONS

Let us provide your group with access to our visitor coupons, featuring savings from dozens of area restaurants, businesses and more.

WELCOME

We can arrange for a Bureau representative or local dignitary to welcome your attendees to our city.

NAME BADGES

We will provide name badges for your attendees at a cost. The name badge can hold up to three lines of text as well as your group's logo. A complete list of names is required at least three weeks prior to your event.



ART GALLERY & STUDIO TOUR

VisitBN.org / 309.665.0033

BN has 22 art galleries waiting to be explored. The CVB has created an art gallery and studio map for visitors wanting to take a self-guided tour. A copy of the map is available in our office or can be downloaded off our website.

Tour Length: Customizable

BARN QUILT HERITAGE TRAIL

McLeanCountyBarnQuilts.com / 309.663.8306

The Barn Quilt Heritage Trail is a selection of over a dozen area barns that display 8 x 8-foot painted plywood quilt squares on their property. It's a celebration of McLean County's farming heritage and the talents of local quilters, artists and poets.

Tour Length: Customizable

BEER NUTS, INC.

103 North Robinson Street, Bloomington, IL 61701
BeerNuts.com / 309.827.8580 • 800.BEERNUTS

Bloomington is the only city in the world where BEER NUTS are made! A video presentation on the making of BEER NUTS can be viewed in the gift shop, and nuts are available to sample in the Company Store.

Tour Length: 20 minutes

BEHIND THE CURTAIN TOUR

600 North East Street, Bloomington, IL 61701
ArtsBloom.org / 309.434.2777
866.686.9541

The fascinating history of the Bloomington Center for the Performing Arts comes to life in the Behind the Curtain Tour. See the beautiful Neoclassical interior design of the BCPA and learn about the updates achieved in the recent renovation.

Tour Length: 60 minutes

CHILDREN'S DISCOVERY MUSEUM

101 East Beaufort Street, Normal, IL 61761
ChildrensDiscoveryMuseum.net / 309.433.3444

Normal's Children's Discovery Museum is three stories of amazing hands-on fun. Families can experience the thrill of hydropower in the Water Works Exhibit, power a city in the You've Got the Power Energy Challenge and for the artistic, Arts Ink features puppetry, the Imagination Theatre, a gigantic Paint Wall, and Art Studio. Visitors will enjoy climbing the two-story Luckey Climber, and will want to experience an array of free science activities offered daily in the Museum's Innovation Station.

Tour Length: Customizable

CRUISIN' WITH LINCOLN ON 66 VISITORS CENTER

McLean County Museum of History
200 North Main Street, Bloomington, IL 61701
CruisinWithLincolnOn66.org / 309.827.0428

This Visitors Center combines two of McLean County's most significant attractions: President Abraham Lincoln and Route 66. Visitors can compare the travels of Lincoln with those of tourists and automobilists during the golden era of Route 66. Interactive exhibits, video monitors, visitor information and a gift shop are also included in the center.

Tour Length: Customizable

DAVID DAVIS MANSION

1000 East Monroe Drive, Bloomington, IL 61701
DavidDavisMansion.org / 309.828.1084

This elegant, 36 room estate of Judge David Davis was completed in 1872 and is a model of mid-Victorian style and taste. A tour of the estate includes a walk-through of the Mansion and Sarah's Garden, as well as an option to view the self-guided exhibit "Prologue to Presidency: Abraham Lincoln on the Illinois Eighth Judicial Circuit."

Tour Length: 60 minutes



DESTIHL BREWERY

1200 Greenbriar Drive, Normal, IL 61761
DestihlBrewery.com / 309.220.9902

Destihl Brewery combines centuries-old global brewing traditions and new American craft brewing techniques to produce a wide array of beers for every palate. There are two options for brewery tours: a guided tour with beer tastings, or a comprehensive tour of brewery operations that is followed by a sampling of beers and culinary creations.

Tour Length: 45 minutes or 60 minutes

EPIPHANY FARMS

9591 North 1540 East Road, Bloomington, IL 61701
EpiphanyFarms.com / 309.828.2323

Epiphany Farms observes the “Farm to Fork” concept, which practices sustainable, beyond organic, environmentally friendly techniques. During its growing season, Epiphany Farms educates tour groups about ethical farming practices and inspires visitors about the future of farming, food and family.

Tour Length: 60 minutes
Seasonal (June-October)

EVERGREEN CEMETERY DISCOVERY WALK

Evergreen Memorial Cemetery
MCHistory.org / 309.438.2586

For two weeks each fall, history is brought to life through costumed actors assuming the intriguing characters of McLean County’s ancestors in the beautiful grounds of Evergreen Memorial Cemetery. Put on your walking shoes and bring your family to participate in this fascinating, award-winning outdoor theater program.

Tour length: 90 minutes
Seasonal

EWING CULTURAL CENTER

48 Sunset Road, Bloomington, IL 61701
EwingManor.IllinoisState.edu / 309.829.6333

This community landmark includes Ewing Manor, the Genevieve Green Gardens and the Theatre at Ewing which hosts the annual Illinois Shakespeare Festival. Completed in 1929 in the Channel-Norman style, Ewing Manor embodies the grace, practicality, and natural beauty envisioned by its original owner, Hazle Buck Ewing. Tours of the Manor and specialty programs with the Ewing Manor Master Gardener are available.

Tour Length: 60 minutes

FUNK PRAIRIE HOME AND GEM & MINERAL MUSEUM

10875 Prairie Home Lane, Shirley, IL 61772
FunkPrairieHomeMuseum.com / 309.827.6792

The Funk Prairie Home was built by hand in 1863-1865 by Illinois State Senator LaFayette Funk. Visitors can view 13 rooms of original furnishings, including a working Victrola. The Gem & Mineral Museum houses a portion of LaFayette Funk II’s extensive collection of rare specimens.

Tour Length: 2 hours

FUNKS GROVE PURE MAPLE SIRUP

5257 Old Route 66, Shirley, IL 61772
FunksPureMapleSirup.com / 309.874.3360

The Funk family business of producing pure maple sirup began in Funks Grove in 1824. Guided tours of the grounds are offered during the sirup-making season and showcase the Funk family process. Funks Pure Maple Sirup and other Funks products can be purchased at the store.

Tour Length: 60 minutes

LOOKING FOR LINCOLN AUDIO TOUR

200 North Main Street, Bloomington, IL 61701
MCHistory.org / 309.827.0428

Bloomington-Normal is a Looking for Lincoln Gateway Community in the heart of the Abraham Lincoln National Heritage area. This CD-based audio tour presents President Lincoln as a returning visitor, talking about the places he visited and their meaning to him. The audio tour is a special and novel way to learn about the history of Lincoln and the role Bloomington-Normal played in his life. The CD can be purchased at the McLean County Museum of History.

Tour Length: 90 minutes

MACKINAW VALLEY VINEYARD

33633 IL Route 9, Mackinaw, IL 61755
MackinawValleyVineyard.com / 309.359.9463

Mackinaw Valley’s oldest vineyard offers a spacious tasting room where guests can enjoy a panoramic view of the valley and majestic vineyards. The vineyard holds game and trivia nights, and during the summer and early fall months it hosts Saturday evening concerts and four annual festivals. Murder Mystery Dinners can be scheduled at any time for groups.

Tour Length: Varies

MCLEAN COUNTY MUSEUM OF HISTORY

200 North Main Street, Bloomington, IL 61701
MCHistory.org / 309.827.0428

The museum features permanent and national, award-winning rotating exhibits that explore the history of Central Illinois. A nearby Route 66 Wayside Exhibit tells the story of the Mother Road’s great significance and impact on the community.

Tour Length: Customizable

MILLER PARK ZOO

1020 South Morris Avenue, Bloomington, IL 61701
MillerParkZoo.org / 309.434.2250

Miller Park Zoo offers many exhibits and Zookeeper interaction opportunities that are enjoyed by the whole family. The Zoo features many large indoor and outdoor exhibits such as a Tropical America Rainforest, Wallaby WalkAbout and Animals of Asia. For groups of over 50 people, the Zoo can be rented out for a one-of-a-kind after hours experience. Various packages are available and can be accommodated to fit your needs.

Tour Length: Customizable

PRAIRIE AVIATION MUSEUM

2929 East Empire Street, Bloomington, IL 61704
PrairieAviationMuseum.org / 309.663.7632

With a collection of preserved aircraft on display, revolving aviation exhibits and memorabilia, a 1941 Link Trainer and a miniature theater, the museum creates an environment where visitors can learn more about the contributions of aviation.

Tour Length: Varies

RADER FAMILY FARMS

1238 Ropp Road, Normal, IL 61761
RaderFamilyFarms.com / 309.275.8765

This seasonal farm is open each fall. Attractions inside the farm include: The Pumpkin Blossom Café and Gift Shoppe, Harvest Brew coffee shop, picnic area and a variety of produce. Activity admission includes access to a jumping pillow, school house education barn, little toddler village, giant mountain slide, climbing straw castle, corny bins, cattle chute jump, rodeo round-up, big digger sandbox, family hayrack rides, train rides for kids, farm animals and live music.

Tour Length: Varies
Seasonal (September-October)



MAJOR EVENTS

ROPP JERSEY CHEESE FARM

2676 Ropp Road, Normal, IL 61761
RoppCheese.com / 309.452.3641

Visitors to the Ropp Jersey Cheese processing facility can see first-hand how fine quality cheeses are made by 6th generation McLean County dairy farmers. Tours also include a walk-through of the retail store which features a cheese slicing room and viewing windows.

Tour Length: 60 minutes

ROUTE 66 DRIVING TOUR

VisitBN.org / 309.665.0033

The Mother Road runs through both Bloomington and Normal! The Bloomington-Normal Area Convention and Visitors Bureau has created a self-guided tour of both historic and major attractions along Route 66 in Bloomington-Normal.

Tour Length: Customizable

RYBURN PLACE AT SPRAGUE'S SUPER SERVICE

305 East Pine Street, Normal, IL 61761
RyburnPlace.com / 309.585.4103

This Tudor-Revival building houses an information center and gift shop. It opened in 1931 to serve travelers on Route 66. Now owned by the Town of Normal, it is on the National Register of Historic Places, is a Town of Normal Local Landmark, and is in the Route 66 Association of Illinois Hall of Fame.

Tour Length: Customizable

SUNSET LAKE VINEYARDS AND WINERY

8621 East 2100 North Road, Carlock, IL 61725
SunsetLakeVineyards.com / 309.376.3027

Sunset Lake Vineyards and Winery grows 12 grape varieties on 11.5 acres and features a tasting list of 12 wines. A log home on the property has been remodeled into the winery and tasting room with a comfortable, warm and inviting atmosphere. The wrap around porch offers lovely views of the vineyards, pond and surrounding countryside. Tours include a walk-through of the vineyards and a wine tasting.

Tour Length: 90 minutes

TWIN GROVES WIND FARM

13682 North 2900 East Road, Ellsworth, IL 61737
TwinGrovesWindFarm.com / 309.724.8278

The Twin Groves Wind Farm is located on two prominent moraines in eastern McLean County. Tours of the farm include information on the facility which produces 396 megawatts of affordable, pollution-free wind energy. Tours begin at the Twin Groves Lookout Visitor Area.

Tour Length: 60 minutes

AMERICAN PASSION PLAY

600 North East Street, Bloomington, IL 61701
AmericanPassionPlay.org
309.829.3903 • 800.354.9640

The American Passion Play takes the audience to Palestine, 30 A.D. and tells the story of Jesus' entire ministry according to the King James Version of the Bible. The audience travels with Christ, seeing the world as He saw it, complete with live animals, pipe organ music, and settings and costumes that re-create the first century Galilee.

Performance Length: 3.5 hours with intermission

CHAMPAGNE BRITISH CAR FESTIVAL

David Davis Mansion
1000 Monroe Drive, Bloomington, IL 61701
CBCF-Bloomington.com / 309.828.1084

This annual, three-day event makes a stop in Bloomington on the final day of the festival. Presented by the Flatlanders British Car Club, the Champagne British Car Festival features vehicles of all British makes, including Austin-Healeys, Aston-Martins and Jaguars on display on the lawn of the David Davis Mansion.

CHRISTMAS AT THE MANSIONS

David Davis Mansion and Ewing Cultural Center
DavidDavisMansion.org / 309.828.1084

Celebrate the holidays with a history lesson at the annual Christmas at the Mansions tour. Visitors will tour the David Davis Mansion, Ewing Manor and mystery mansion, decorated in all of their Christmas finery.

GAMMA PHI CIRCUS

Redbird Arena, Illinois State University
GammaPhiCircus.IllinoisState.edu
309.438.2690

The Gamma Phi Circus is the oldest collegiate circus in the nation. Held every year at Illinois State University's Redbird Arena, the circus features dazzling acrobatic and trapeze acts.

ILLINOIS SHAKESPEARE FESTIVAL

Ewing Cultural Center
48 Sunset Road, Bloomington, IL 61701
TheFestival.org / 309.438.2535 • 866.467.4253

The Festival exemplifies a long-standing tradition of performing the plays of William Shakespeare. Theatre-goers can also enjoy behind the scenes tours and ice cream socials with the cast and crew.

LINCOLN'S FESTIVAL ON 66

Downtown Bloomington
MCHistory.org / 309.827.0428

Celebrate Abraham Lincoln's legacy in BN and enjoy Civil War re-enactments, traditional craft demonstrations, talks, tours, and more. An acting troupe performs stories about Lincoln during his time in BN.

SUGAR CREEK ARTS FESTIVAL

Uptown Normal
MCAC.org / 309.829.0011

The streets of Uptown Normal are painted with artists and art lovers alike during the annual Sugar Creek Arts Festival. The festival only allows original pieces of artwork to be shown so visitors are ensured a one-of-a-kind experience.

SWEET CORN BLUES FESTIVAL

Uptown Normal
UptownNormal.com / 309.454.9760

Sidewalk sales, arts, crafts, flea market vendors and over 50,000 ears of fresh sweet corn fill the streets of Uptown Normal each August to welcome back the students at Illinois State University. Come out and enjoy the fun, food and some of the best blues music around!

RESTAURANTS

GROUP-FRIENDLY



ANJU ABOVE

220 East Front Street, Bloomington, IL 61701
EpiphanyFarms.com/Anju / 309.828.8704

American Cuisine | Occupancy: 120 main dining
Anju Above blends internationally inspired small dishes with socially responsible farming techniques to create a fast and fun, farm fresh experience for their guests. Their menu includes sushi, Neapolitan pizzas and Asian dumplings.

AVANTI'S ITALIAN RESTAURANT

3302 East Empire Street, Bloomington, IL 61704
AvantisBloomington.com / 309.662.4436

Italian Cuisine | Occupancy: 136 main dining, 70 people maximum for private banquet room

Avanti's Italian Restaurant was established in Normal in 1971 and is known for their home style pasta, pizza, salads and sandwiches.

BAXTERS

3212 East Empire Street, Bloomington, IL 61704
BaxtersGrille.com / 309.662.1114

American Cuisine/Steakhouse | Occupancy: 72 bar and 207 main dining/lobby, 85 people maximum for private banquet room

Baxters offers seasonal menus filled with delicious signature dishes of steak, seafood and chops.

BIAGGI'S RISTORANTE ITALIANO

1501 North Veterans Parkway, Bloomington, IL 61704
Biaggis.com / 309.661.8322

Italian Cuisine | Occupancy: 160 main dining, 100 people maximum for private dining

Biaggi's has a wide variety of classic Italian dishes and offers a comfortable atmosphere and a relaxing place to dine.

BRAIZE

1413 Leslie Drive Unit #2, Bloomington, IL 61704
BraizeFood.com / 309.262.2270

American Cuisine | Occupancy: 106 main dining, 70 on outdoor patio

BraiZe is known for its small menu with big taste. The menu is updated regularly based on seasonal availability.

CRACKER BARREL

502 Brock Drive, Bloomington, IL 61701
309.829.3155 / CrackerBarrel.com

American Cuisine | Occupancy: Take groups of any size. Seats in sections of four. No private dining.

Cracker Barrel is the place to go for home-style country food. Breakfast is served all day, while lunch and dinner favorites include the Roast Beef Dinner and the Country Fried Steak.

DESTIHL BREWERY

1200 Greenbriar Drive, Normal, IL 61761
DESTIHL.com / 309.296.0159

American Pub Fare Cuisine | Occupancy: 250 main dining, 100 on outdoor patio

The menu was designed to pair well with their bold and innovative beer flavors. Their culinary creations include chicken adobo pizza, pork and pineapple tacos and the BLT.

EPIPHANY FARMS RESTAURANT

220 East Front Street, Bloomington, IL 61701
EpiphanyFarms.com / 309.828.2323

American Cuisine | Occupancy: 140 main dining, 200 people maximum for private banquet room

Epiphany Farms Restaurant is a unique farm-to-fork restaurant. Their dishes are made from the freshest locally-grown ingredients.

JIM'S STEAKHOUSE

2307 East Washington Street, Bloomington, IL 61701
JimsBloomington.com / 309.663.4142

American Cuisine/Steakhouse | Occupancy: 80-100 main dining, 85 people maximum for private dining

At Jim's Steakhouse, they pride themselves on serving the finest quality beef available. They are one of the only establishments in Central Illinois that dry-ages their meat, a process that intensifies the flavor and texture. They are also known for mouth-watering seafood and appetizers.

KELLY'S ON 66

905 West Main Street, Lexington, IL 61753
KellysOn66.Business.Site / 309.365.7777

American Cuisine | Occupancy: 85 main dining, 50 on outdoor patio

This family-owned restaurant is located in a former gas station and café on Route 66. They're famous for their pizza but also serve family favorites, including burgers and pasta.

MEDICI

120 West North Street, Normal, IL 61761
MediciNormal.com / 309.452.6334

American Cuisine | Occupancy: 80 patio, 25 small private, 64 sit down private, 200 main not sit down, 64 people maximum for second floor, private dining room with bar

At Medici, they appreciate the importance of details in both their food and décor. The restaurant features delicious entrees, the largest selection of domestic microbrews in Bloomington-Normal, an outdoor patio and a 30-foot Mulberry tree in the atrium.

MICHAEL'S RESTAURANT

110 West Washington Street, Bloomington, IL 61701 / MichaelsBloomington.com
309.820.1330

American Cuisine | Occupancy: 135 main dining, 60 people maximum for second floor, private dining room

Michael's Restaurant offers appetizers, salads, pastas, steaks, pork chops, chicken, veal, sandwiches, pizza and homemade desserts. They are known for their delicious Sunday brunch.

OZARK HOUSE

704 South McGregor Street, Bloomington, IL 61701 / TheOzarkHouse.com / 309.827.3900

American Cuisine | Occupancy: 100 main dining, 175 people maximum for private banquet room

The Ozark House is a locally-owned restaurant that is known for their homemade recipes, succulent BBQ dishes, hand-cut steaks, and exceptionally fresh seafood.

PIZZA RANCH

1211 Holiday Drive, Bloomington, IL 61761
309.820.9777 / PizzaRanch.com

American Cuisine | Occupancy: 80 people in back two semi-private dining rooms

Pizza Ranch features a popular buffet of salad, sides, pizza and chicken. End your meal with a delicious desert pizza.

TONY ROMA'S

1601 Jumer Drive, Bloomington, IL 61761 / 309.662.2525 / TonyRomas.com

American Cuisine/Steakhouse | Occupancy: 30 main-dining, 80 in private dining room, 40 in second private dining room.

Ribs, steak, chicken, burgers and seafood: Tony Roma's has it all. Their mini-desserts are the perfect way to end your meal.

