

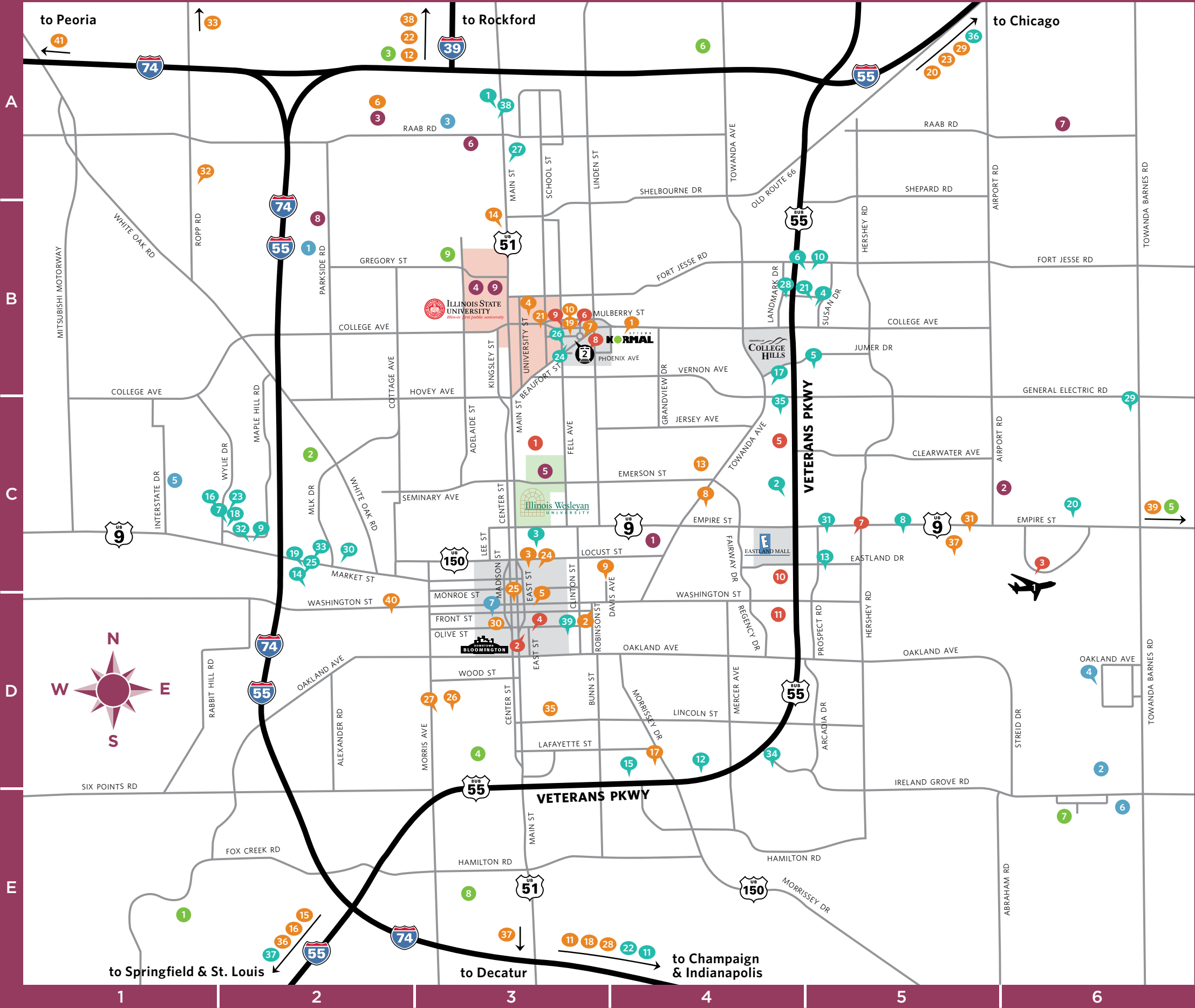
AREA MAP



**“It’s such a pleasure to come to the Bloomington-Normal Area.
Everyone is so friendly and very helpful.”**

Nancy Patton - IL Great Rivers Conference of the United Methodist Church

BLOOMINGTON-NORMAL AREA MAP



ACCOMMODATIONS		
1. Baymont Inn & Suites	A3	
2. Baymont Inn & Suites	C4	
3. Burr House Bed & Breakfast	C3	
4. Candlewood Suites Hotel	B5	
5. The Chateau Hotel & Conference Center	B5	
6. Comfort Suites East	B5	
7. Comfort Suites West	C2	
8. Country Inn & Suites Airport	C5	
9. Country Inn & Suites West	C2	
10. Courtyard by Marriott	B5	
11. Days Inn Le Roy	E4	
12. DoubleTree by Hilton	D4	
13. Eastland Suites Hotel & Conference Center	C5	
14. Econolodge Inn & Suites	C2	
15. Extended Stay America	D4	
16. Fairfield Inn & Suites	C2	
17. Hampton Inn & Suites	B4	
18. Hampton Inn West	C2	
19. Hawthorn Suites & Conference Center	C2	
20. Holiday Inn & Suites	C6	
21. Holiday Inn Express & Suites	B5	
22. Holiday Inn Express Le Roy	E4	
23. Holiday Inn Express West	C2	
24. Hyatt Place		
25. La Quinta Inn	C2	
26. Marriott Hotel & Conference Center	B3	
27. Motel 6	A3	
28. Motel 6	B4	
29. Parke Regency Hotel & Conference Center	C6	
30. Quality Inn & Suites		
31. Quality Inn & Suites East	C5	
32. Ramada Limited & Suites	C2	
33. Red Roof Inn	C2	
34. Residence Inn by Marriott	D4	
35. Super 8 Bloomington	C4	
36. Super 8 Chenoa	A5	
37. Super 8 McLean	E2	
38. Super 8 Normal	A3	
39. Vrooman Mansion Bed & Breakfast	D3	

GOLF COURSES		
1. The Den at Fox Creek	E1	
2. Golf Learning Center	C2	
3. Hazy Hills Golf Course	A2	
4. Highland Park Golf Course	D3	
5. Indian Springs Golf Club	C6	
6. Ironwood Golf Course	A4	
7. The Links at Ireland Grove	E6	
8. Prairie Vista Golf Course	E3	
9. Weibring Golf Club at ISU	B3	

COMMUNITY		
1. Advocate BroMenn Medical Center	C3	
2. Bloomington City Hall	D3	
3. Bloomington-Normal Area CVB	D3	
4. Bloomington Public Library	D3	
5. COUNTRY Financial Home Office	C4	
6. Economic Development Council	B3	
7. McLean County Chamber of Commerce	C5	
8. Normal City Hall	B3	
9. Normal Public Library	B3	
10. OSF St. Joseph Medical Center	C4	
11. State Farm Home Office	D4, E4	

SHOPPING		
• Eastland Mall	C4	
• Downtown Bloomington	D3	
• The Shoppes at College Hills	B4	
• Uptown Normal	B3	

ATTRACTIONS		
1. Anderson Park & Aquatic Center	B4	
2. BEER NUTS, Inc.	D3	
3. Bloomington Center for the Performing Arts	C3	
4. Braden Auditorium	B3	
5. Castle Theatre	D3	
6. Challenger Learning Center	A2	
7. Children's Discovery Museum	B3	
8. Community Players Theatre	C4	
9. David Davis Mansion	C3	
10. Ecology Action Center	B3	
11. Empire Township Historical Museum	E3	
12. Evergreen Lake at Comlara County Park	A2	
13. Ewing Cultural Center & Genevieve Green Gardens	C4	
14. Fairview Park & Family Aquatic Center	B3	
15. Funks Grove Pure Maple Sirup	E2	
16. Funks Prairie Home & Gem & Mineral Museum	E2	
17. Grady's Family Fun Park	D4	
18. Grand Village of the Kickapoo Park	E3	
19. Historic Normal Theater	B3	
20. Historic Route 66 Memory Lane	A5	
21. ISU Planetarium	B3	
22. Lake Bloomington	A3	
23. Matthew T. Scott Home	A5	
24. McLean County Arts Center	C3	
25. McLean County Museum of History / Cruisin' with Lincoln on 66 Visitor Center	C3	
26. Miller Park Pavilion & War Memorial	D3	
27. Miller Park Zoo	D3	
28. Moraine View State Park	E3	
29. Patton Log Cabin	A5	
30. Pepsi Ice Center	D3	
31. Prairie Aviation Museum	C5	
32. Rader Family Farm	A1	
33. Ropp Jersey Cheese Farm	B1	
34. Simpkins Military History Museum	E3	
35. Stevenson Graves at Evergreen Memorial Cemetery	D3	

EVENT COMPLEXES		
1. The Den at Fox Creek	E1	
2. Golf Learning Center	C2	
3. Hazy Hills Golf Course	A2	
4. Highland Park Golf Course	D3	
5. Indian Springs Golf Club	C6	
6. Ironwood Golf Course	A4	
7. The Links at Ireland Grove	E6	
8. Prairie Vista Golf Course	E3	
9. Weibring Golf Club at ISU	B3	

AREA EDUCATION		
1. Bloomington High School	C4	
2. Central Catholic High School	C6	
3. Heartland Community College	A2	
4. Illinois State University	B3	
5. Illinois Wesleyan University	C3	
6. Lincoln College-Normal	A3	
7. Normal Community High School	A6	
8. Normal West High School	B2	
9. University High School	B3	

TRANSPORTATION		
1. Central Illinois Regional Airport	C6	
2. Uptown Station/Amtrak	B3	

Map is not to scale. Contact the Bloomington-Normal Area Convention and Visitors Bureau at 800.433.8226 for help finding specific locations.



3201 CIRA Drive, Suite 201, Bloomington, IL 61704
inside the Central Illinois Regional Airport

800.433.8226 • 309.665.0033 • VisitBN.org

*Published by the BNACVB. The information in this guide was current at the time of publication.
The BNACVB assumes no responsibility for errors, changes or omissions and reserves the right to
edit any listing for content and/or length. Maps and diagrams are not to scale.*

© 2016 BNACVB. All rights reserved. January 2016—200

MEETINGS



"The convenient location for our members encourages us to hold meetings in Bloomington-Normal. Working with the hotels and the staff at the CVB make my job much easier!"

*Jackie Rakers - Executive Director of the
Illinois Association of Mutual Insurance Companies*

WELCOME TO BLOOMINGTON-NORMAL



YOUR DESTINATION FOR MEETINGS AND CONVENTIONS!

Bloomington-Normal offers excellent facilities, accessibility and services at an affordable cost. Centrally located along Interstates 55, 74 and 39, Bloomington-Normal is your premier meeting destination.

The professional staff members of the Bloomington-Normal Area Convention & Visitors Bureau are ready to assist you from site selection through post-convention follow-up to ensure a successful event. We hope you will visit us soon and let our premier location, facilities and affordability increase attendance at your next meeting.

DRIVING HOURS TO BLOOMINGTON-NORMAL

ILLINOIS

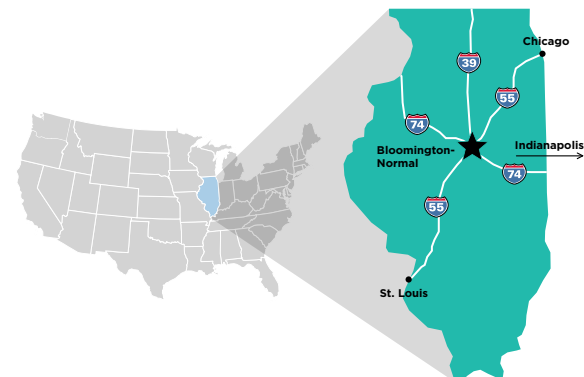
Carbondale / 4
Champaign-Urbana / .75
Chicago / 2
Decatur / 1
Peoria / .75
Quad Cities / 2.5
Rockford / 2
Springfield / 1

MIDWEST

Cincinnati, OH / 4.5
Cleveland, OH / 7.5
Des Moines, IA / 4.5
Detroit, MI / 6.5
Indianapolis, IN / 2.5
Kansas City, MO / 6
Milwaukee, WI / 3.5
Minneapolis, MN / 7.5
Nashville, TN / 6.5
St. Louis, MO / 2.5

BLOOMINGTON-NORMAL

is located in the heart of Illinois. 2 hours from Chicago and 2.5 hours from St. Louis and Indianapolis, our city is easy to access by air, rail, and through the intersection of Interstates 39, 55, 74 and Route 66.



CONTENTS

Group Services	2
The Chateau Hotel & Conference Center	3
DoubleTree by Hilton	4
Holiday Inn Hotel & Suites	5
Marriott Hotel & Conference Center	6
Parke Regency Hotel & Conference Center	7
Bloomington Center for the Performing Arts	8
Heartland Community College	9
Interstate Center	10
Illinois State University	11
Illinois Wesleyan University	12
U.S. Cellular Coliseum	13
Additional Hotels	14-16
Additional Facilities	16-17



3201 CIRA Drive, Suite 201, Bloomington, IL 61704
inside the Central Illinois Regional Airport

800.433.8226 • 309.665.0033 • VisitBN.org

Published by the BNACVB. The information in this guide was current at the time of publication. The BNACVB assumes no responsibility for errors, changes or omissions and reserves the right to edit any listing for content and/or length. Maps and diagrams are not to scale.

© 2016 BNACVB. All rights reserved. January 2016—200



GROUP SERVICES



THE CHATEAU HOTEL & CONFERENCE CENTER

The Bloomington-Normal Area Convention and Visitors Bureau is a full-service bureau, offering a number of site selection, pre-event and on-site services.

SITE SELECTION / PLANNING ASSISTANCE

Our staff will research rates and availability of local facilities/hotels for your event. We are happy to coordinate tours of any facility.

NEWS RELEASE

Our area prides itself on the events we host. At your direction, we will develop and submit a news release to all local media detailing your event. Information for the news release is required at least two weeks prior to your event.

LITERATURE / MAPS

Please let us know if you would like any information on the Bloomington-Normal area for your participants. We can provide you with visitor guides, various brochures or tear-off maps. We can also customize an information sheet for your website or mailing.

COUPONS

Let us provide your group with access to our visitor coupons, featuring savings from dozens of area restaurants, businesses and more.

WELCOME

We can arrange for a Bureau representative or local dignitary to welcome your attendees to our city.

NAME BADGES

We will provide name badges for your attendees at a cost. The name badge can hold up to three lines of text as well as your group's logo. A complete list of names is required at least three weeks prior to your event.

TOUR ASSISTANCE

With unique and exciting attractions, your attendees will have a great time in Bloomington-Normal. Our area offers historical tours, cultural activities, educational experiences, and more. Let us know if we can help schedule some exciting activities for spouses, family members and attendees during your event. Bloomington-Normal tours include:

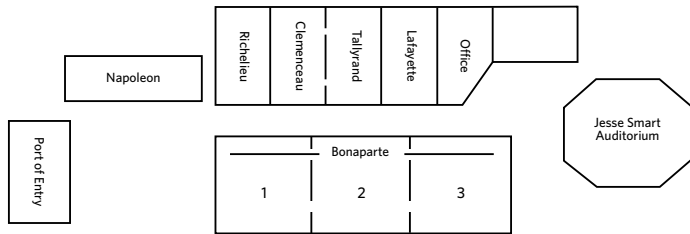
- Barn Quilt Heritage Trail
- BEER NUTS, INC.
- Bloomington Center for the Performing Arts
- Cruisin' with Lincoln on 66 Visitors Center
- David Davis Mansion
- Epiphany Farms
- Ewing Cultural Center
- Funk's Prairie Home and Gem & Mineral Museum
- Funk's Grove Pure Maple Sirup
- Mackinaw Valley Vineyard
- McLean County Museum of History
- Prairie Aviation Museum
- Twin Groves Wind Farm
- White Oak Vineyard



THE CHATEAU BLOOMINGTON HOTEL AND CONFERENCE CENTER

1621 Jumer Drive, Bloomington, IL 61704
BloomingtonChateau.com / 309.662.2020

The Chateau is a unique-themed, full-service hotel and conference center offering 180 beautifully designed guest rooms and 9,000 square feet of meeting space. The Chateau offers banquet and meeting facilities that will accommodate up to 500 guests and a unique, private 100-seat indoor amphitheater that is ideal for training seminars and product displays. The Chateau is an excellent destination for conventions, conferences and meetings.



	Ceiling Height	Dimensions (ft ²)	Banquet	Theater	Classroom	U-Shape
Bonaparte	16'	110' x 44' (4,840)	350	480	280	100
Bonaparte (1 Section)	16'	36' x 44' (1,585)	110	125	85	35
Clemenceau & Tallyrand	9'	30' x 24' (690)	40	40	25	20
Lafayette	9'	15' x 24' (360)	25	20	10	10
Clemenceau	9'	15' x 24' (360)	25	20	10	10
Richelieu	9'	15' x 24' (360)	25	20	10	10
Tallyrand	9'	15' x 24' (360)	25	20	10	10
Jesse Smart Auditorium	-	Stage = 16' x 7.5'	-	100	90	-
Port Of Entry	9'	17' x 31' (527)	50	60	45	20
Napoleon	9'	16' x 35' (560)	25	30	25	20



DOUBLETREE BY HILTON



10 Brickyard Drive, Bloomington, IL 61701
Bloomington.DoubleTree.com / 309.664.6446

The Doubletree by Hilton is located in the heart of Central Illinois at the corner of Brickyard Drive and Veterans Parkway in Bloomington. Boasting 197 rooms, including 12 luxurious whirlpool suites and a TGI Friday’s Restaurant, the hotel also offers 20,000 square feet of meeting space that can accommodate up to 1,000 people. It’s everything you’ve ever wanted in your convention hotel—and then some!

	Ceiling Height	Dimensions (ft²)	Banquet	Theater	Classroom	U-Shape
Brickyard I	16’	33’ × 63’ (2,079)	120	165	120	45
Brickyard II	16’	30’ × 63’ (1,890)	120	165	100	45
Brickyard III	16’	30’ × 63’ (1,890)	120	150	100	45
Brickyard IV	13’	33’ × 50’ (1,650)	120	130	80	30
Brickyard V	13’	34’ × 50’ (1,700)	120	130	80	30
Brickyard VI	13’	33’ × 50’ (1,650)	120	120	80	30
Brickyard Ballroom (I-VI)	16’	193’ × 63’ (12,159)	670	1,086	-	-
Brookridge	8’	28’ × 29’ (812)	50	60	35	25
Ironwood	8’	36’ × 19’ (684)	30	50	20	20
Fox Creek	8’	21’ × 26’ (546)	30	20	20	15
Prefunction Area	13’-16’	(4,875)	380	-	-	-
Northbridge	8’	13’ × 18’ (234)	10	12	9	8



3202 East Empire Street, Bloomington, IL 61704
HolidayInn.com/BloomingtonIL / 309.662.4700

The entire staff of the Holiday Inn & Suites Bloomington welcomes the opportunity to serve your guests. The hotel is located across from the Central Illinois Regional Airport in Bloomington’s fastest growing eastside neighborhood. Let the professional staff take care of the details of your event. We invite travelers to an exclusive guest experience in the completely renovated guest rooms, function rooms and public areas. All 126 of the luxurious rooms and suites include microwave, refrigerator, HD televisions, and WIFI. The Holiday Inn & Suites is a proud member of the IHG Green Engage program and the Stay Green program of the Illinois Hotel & Lodging Association. In addition, local favorite, the adjoining Baxters American Grille offers an excellent dining experience.

	Ceiling Height	Dimensions (ft²)	Banquet	Theater	Classroom	U-Shape
Ballroom	10’	100’ × 40’ (4,000)	275	300	200	108
Marie Litta	10’	37’ × 40’ (1,480)	80	126	56	36
Sarah Raymond	10’	25’ × 40’ (1,000)	64	60	30	24
Rachel Crothers	10’	37’ × 40’ (1,480)	80	126	56	36
Litta & Raymond	10’	62’ × 40’ (2,480)	128	186	90	60
Raymond & Crothers	10’	62’ × 40’ (2,480)	128	186	90	60



HOLIDAY INN HOTEL & SUITES

Marie Litta	Sarah Raymond	Rachel Crothers
-------------	---------------	-----------------



MARRIOTT

HOTEL & CONFERENCE CENTER



201 Broadway Avenue, Normal, IL 61761
MarriottNormal.com / 309.862.9000

The cornerstone of Normal’s uptown renewal, the Marriott Hotel & Conference Center is surrounded by the best dining, entertainment and shopping the town has to offer. The hotel has 228 guest rooms and is conveniently connected to the Normal Theater. It is just a short walk from the Children’s Discovery Museum, Uptown Station, Illinois State University and much more.

	Ceiling Height	Dimensions (ft²)	Banquet	Theater	Classroom	U-Shape
Redbird Ballroom (A-G)	25'	200' × 100' (20,000)	1,200	2,000	1,000	-
Redbird A, B	25'	50' × 50' (2,500)	130	150	110	30
Redbird A & B (combined)	25'	50' × 100' (5,000)	220	300	200	-
Redbird C	25'	50' × 100' (5,000)	220	400	230	-
Redbird D	25'	50' × 100' (5,000)	220	400	230	-
Redbird E, F, G	25'	50' × 33' (1,650)	80	120	70	27
Redbird E, F, & G (combined)	25'	50' × 100' (5,000)	220	300	180	-
Beaufort	10'	26' × 30' (780)	40	50	40	24
Fell A	10'	28' × 30' (840)	40	50	36	24
Fell B	10'	28' × 30' (840)	40	50	36	24
Fell C	10'	28' × 30' (840)	40	50	36	24
North Executive Boardroom	10'	Seating for 12, conference style				
Broadway Executive Boardroom	10'	Seating for 12, conference style				



1413 Leslie Drive, Bloomington, IL 61704
ParkeHotel.com / 309.662.4300

The Parke Regency Hotel & Conference Center is a beautifully designed, three-story boutique hotel located on the east side of Bloomington. The hotel boasts luxury accommodations with its 65 rooms and 5 whirlpool suites, and a sense of fun and escape from the ordinary. The Parke Regency Hotel & Conference Center offers 11,500 square feet of flexible meeting space for up to 1,000 guests. Experience the Parke Regency and you will leave with something to talk about!

	Ceiling Height	Dimensions (ft²)	Banquet	Theater	Classroom	U-Shape
Ballroom	16'	150' × 70' (10,500)	600	810	390	-
Hawthorne/Denali/Glacier -or- Hawthorne/Redwood/Sierra	16'	70' × 97' (6,790)	432	550	230	-
Redwood/Sierra/Glacier/Denali	16'	70' × 52' (3,640)	224	260	160	-
Hawthorne	16'	70' × 45' (3,150)	152	250	150	-
Redwood	14'	52' × 33' (1,716)	72	130	80	-
Sierra	14'	52' × 33' (1,716)	72	130	80	-
Denali	14'	52' × 33' (1,716)	72	130	80	-
Glacier	14'	52' × 33' (1,716)	72	130	80	-
Yosemite	14'	18' × 30' (540)	-	40	32	-
Yellowstone	14'	18' × 30' (540)	-	40	32	-



PARKE REGENCY

HOTEL & CONFERENCE CENTER



BLOOMINGTON

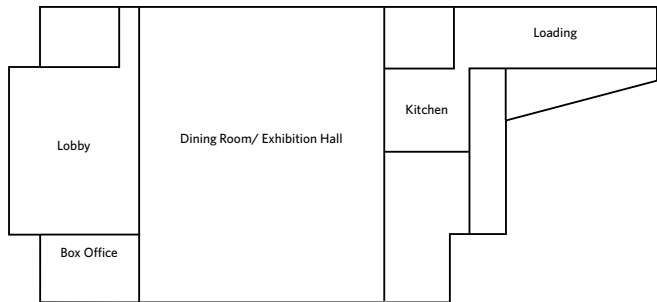
CENTER FOR THE PERFORMING ARTS



600 North East Street, Bloomington, IL 61701
ArtsBloomington.org / 309.434.2777

The historic landmark Bloomington Center for the Performing Arts is the only fully equipped and staffed mid-sized theater in Bloomington-Normal. The BCPA features a new two-bay loading dock, new star and group dressing rooms, new rigging, lighting and sound systems, a full service ticket office and professional event and management staff to serve your needs – from presenting a solo artist to a full theatrical production. In addition to the auditorium, which provides seating for 1,200 people, the BCPA can accommodate large groups in their ballroom, which seats up to 1,400 people. Four additional breakout spaces are also available with a total seating capacity of up to 360 people.

	Ceiling Height	Dimensions (ft²)	Banquet	Theater	Classroom	U-Shape
Auditorium	-	2 levels	-	1,200	-	-
Ballroom	13.5'	82' × 142' (11,644)	1,100	1,400	400	-
Patron Lounge 118	13.5'	128' × 37' (1,036)	80	120	95	24
Patron Lounge 231	11.5'	22' × 28' (616)	48	60	32	24
Patron Lounge 266	11.5'	22' × 28' (616)	48	60	32	24
Patron Lounge 332	10'	22' × 28' (616)	48	60	32	24



1500 West Raab Road, Normal, IL 61761
Heartland.edu / 309.268.8205

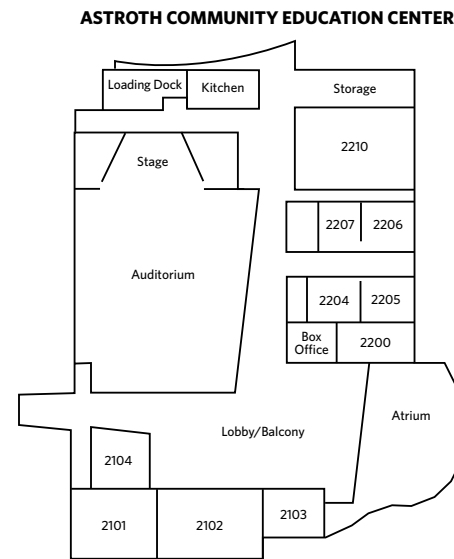
Heartland Community College’s beautiful 256-acre campus provides visitors with appealing, high-technology meeting spaces for a broad range of organizations and business activities consistent with the College’s mission and policies. Available spaces range from a 434-seat auditorium to traditional classroom seating for up to 40 people, as well as more personal conference rooms that provide comfortable environments that encourage smaller group discussions. Assorted layouts can accommodate various events, and all rooms are equipped with leading-edge audio/visual and computer equipment. Campus catering also is available.

	Ceiling Height	Dimensions (ft²)	Banquet	Theater	Classroom	U-Shape
Auditorium	-	4,264	-	434	-	-
2100	-	476	-	-	12	-
2101	-	934	-	48	36	28
2102	-	974	-	48	48	36
2101/2102	-	1,908	-	96	96	-
2103	-	454	-	-	12	-
2200	-	438	-	-	12	-
2204	-	381	-	24	12	8
2205	-	456	-	-	12	-
2204/2205	-	837	-	48	24	16
2206	-	472	-	28	16	12
2207	-	331	-	-	12	-
2206/2207	-	803	-	48	24	16
2210	-	1,416	-	70	70	38



HEARTLAND

COMMUNITY COLLEGE



INTERSTATE CENTER

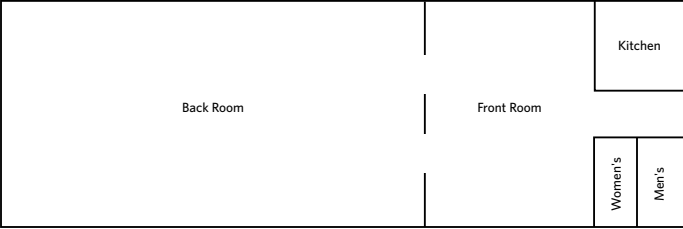


1106 Interstate Drive, Bloomington, IL 61705
McLeanCountyFair.org / 309.663.6497

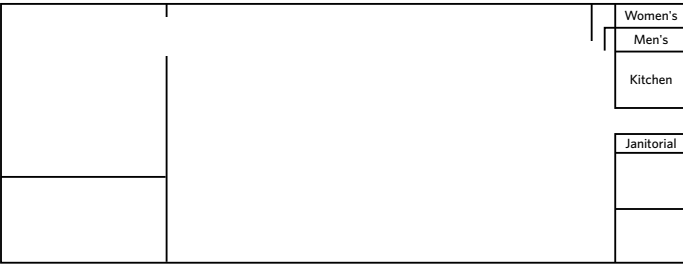
The Interstate Center is a 103 acre facility with two enclosed buildings and four clear span metal barns. They accommodate trade shows, wedding receptions, flea markets, dog shows, gaming conventions, fundraisers and more. The enclosed buildings can also be connected together by a tunnel to increase the size of any event and are air conditioned. The usable space for the enclosed buildings are 17,700 sq. ft. and 26,000 sq. ft., and the outdoor covered barns are each 20,000 sq. ft. A grandstand, dirt track and mobile sound stage are also available for outdoor events.

	Ceiling Height	Dimensions (ft²)	Banquet	Theater	Classroom	U-Shape
Mini Expo (Front Room)	13'-16'	4,580	160	500	110	-
Mini Expo (Back Room)	13'-16'	11,770	384	1,200	500	-
West Expo	16'-19'	21,760	900	2,400	1,200	-

MINI EXPO



WEST EXPO



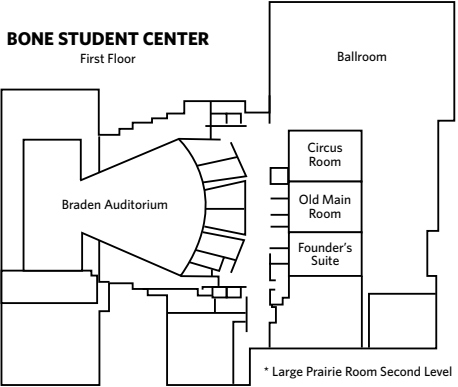
ILLINOIS STATE UNIVERSITY
Illinois' first public university

1101 North Main Street, Normal, IL 61790
Conferences.ILSTU.edu / 309.438.2160

Illinois State University's unique blend of facilities can accommodate groups from 10 to 10,000. ISU offers your organization state-of-the-art meeting rooms and auditoriums, classrooms equipped with advanced technology, quality food service, residence hall accommodations for up to 6,500 people, recreational facilities, business support services and a rich cultural environment.

	Ceiling Height	Dimensions (ft²)	Banquet	Theater	Classroom	U-Shape
Braden Auditorium	-	3 levels	-	3,457	-	-
Brown Ballroom	18'	(14,578)	640	1,100	650	-
Large Prairie Room (3 sections)	12'	(5,375)	210	400	320	-
Activity Room	12'	(4,440)	200	300	200	60
Old Main Room	10'	(3,700)	160	250	180	60
Circus Room	10'	(3,600)	152	200	140	40
Lounges (3 Total)	10'	-	64	80	48	32
Founder's Suite	10'	(1,730)	40	60	48	24
Spotlight Room	9'	(682)	-	-	-	-
Private Dining Room	9'	(294)	12	-	-	-
Alumni Center - Room 116	13'	51' x 44' (2,343)	128	216	126	33
Alumni Center - Room 117	10'	19' x 35' (680)	-	-	20	-
Alumni Center - Room 118	13'	44' x 66' (3,000)	184	324	168	36
Alumni Center - Room 119	10'	19' x 37' (721)	-	-	36	15
Great Hall	-	(2,770)	-	-	-	-
Carl E. Kasten Conference Rm	11'	19' x 33' (689)	-	-	-	28
Redbird Arena	100'	(37,422)	-	10,000	-	-

ILLINOIS STATE UNIVERSITY





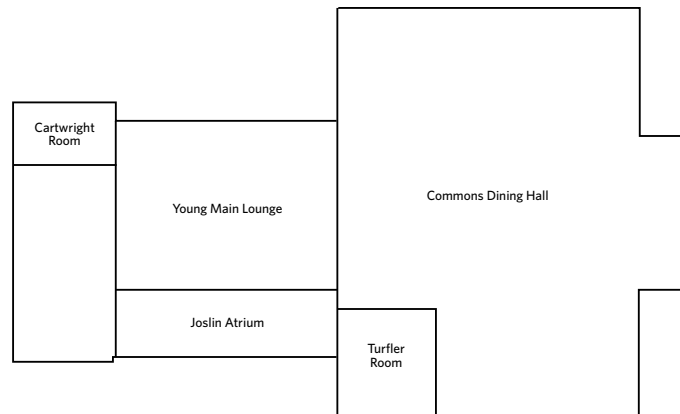
ILLINOIS WESLEYAN UNIVERSITY



104 East University Avenue, Bloomington, IL 61701
IWU.edu/Conferences / 309.556.3591

Illinois Wesleyan University's beautiful campus, nestled in a quiet neighborhood just minutes from Downtown Bloomington and Uptown Normal, provides the ideal environment for events. With over 60 meeting spaces, a state-of-the-art recreation facility, full-service catering, housing accommodations, convenient parking, and ample green space, Illinois Wesleyan offers a wide variety of options for groups as small as eight and as large as 500.

	Ceiling Height	Dimensions (ft²)	Banquet	Theater	Classroom	U-Shape
Cartwright Room	10'9"	34' × 18' (612)	-	-	10	-
Commons Dining Hall	11'11"	126' × 83' (10,458)	500	-	175	-
Davidson Room	8'11"	31' × 51' (1,581)	64	80	60	30
Hansen Center Court	50'	62' × 39' (2,418)	176	393	100	42
Hansen Conference Room	9'	17' × 13' (221)	-	-	-	-
Hansen Room 200	8'	47' × 16' (752)	56	75	-	24
Henning Room	8'11"	29' × 31' (899)	32	50	15	24
Joslin Atrium	10'9"	29' × 88' (2,552)	128	196	70	40
Turfler Room	11'11"	38' × 42' (1,596)	96	-	-	-
Young Main Lounge	16'4"	65' × 83' (5,395)	225	374	180	60



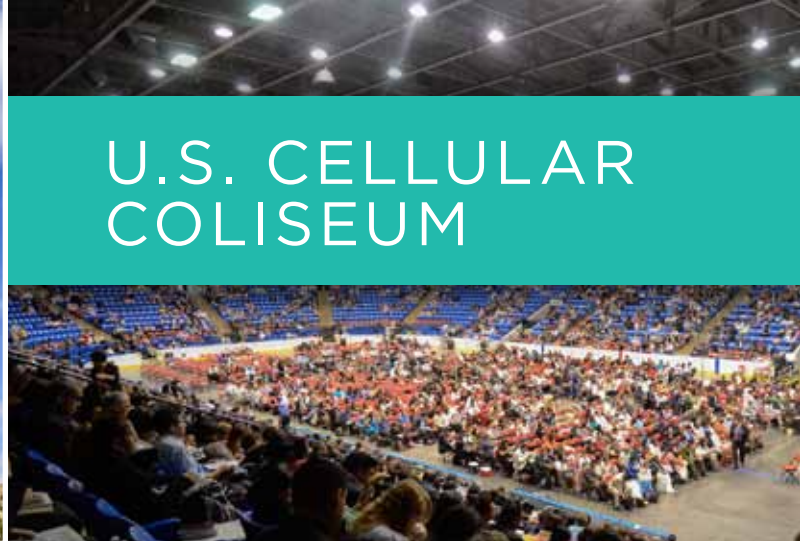
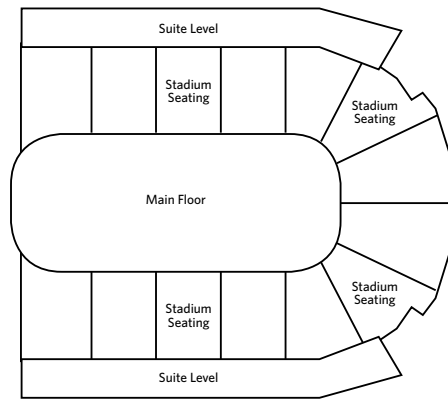
101 South Madison Street, Bloomington, IL 61701
USCellularColiseum.com / 309.434.2843

The U.S. Cellular Coliseum, located in historic Downtown Bloomington, is a state-of-the-art multi-purpose recreation and entertainment facility. The Coliseum is a first-class, air-conditioned arena; designed specifically to meet the needs of all types of entertainment including major concerts, trade shows, conventions, sporting and civic events. The Coliseum can seat up to 8,000 for concerts and other special events. The theater set-up provides a more intimate experience, with full house curtaining to cut down the size of the seating area to 2,500 - 3,500. Make the U.S. Cellular Coliseum your entertainment destination!

Since its opening, the Coliseum has hosted an array of events, including concerts, family shows, ice shows, motor sports and trade shows. The U.S. Cellular Coliseum is also home to two professional sports teams.

The City of Bloomington's public ice facility, The Pepsi Ice Center, sits adjacent to the U.S. Cellular Coliseum and hosts ice skating lessons, hockey lessons, hockey leagues, Illinois State University hockey and more.

	Ceiling Height	Dimensions (ft²)	Banquet	Theater	Classroom	U-Shape
U.S. Cellular Coliseum	52'	3 levels	-	3,000-8,000	-	-
Main Floor	52'	200' × 85' (17,000)	600	1,500	-	-
Smokehouse Restaurant	10'	85' × 25'	60-80	75	65	35
Bud Light Lounge	9'-15'	180' × 25'	80-100	85	75	25
North Concourse	9'-15'	175' × 20'	60-75	50	50	25
Private Dining Room	8'	25' × 18'	25	40	30	20



U.S. CELLULAR COLISEUM

ADDITIONAL HOTELS



1801 Eastland Drive, Bloomington, IL 61704
EastlandSuites.com / 309.662.0000

Eastland Suites Hotel & Conference Center offers 112 newly renovated guest rooms, 88 of which are completely furnished suites. Eastland Suites Hotel & Conference Center can accommodate groups of up to 300 people with over 3,200 square feet of flexible meeting space.



	Ceiling Height	Dimensions (ft²)	Banquet	Theater	Classroom	U-Shape
Conference 1	10'	40' × 40' (1,600)	90	120	80	40
Conference 2	10'	20' × 40' (800)	60	60	40	20
Conference 3	10'	20' × 40' (800)	60	60	40	20
Ballroom	10'	80' × 40' (3,200)	250	300	150	70
Eastland Room	10'	18' × 27' (486)	40	40	15	20



1 Lyon Court, Bloomington, IL 61701
HotelBloomington.com / 309.829.8111

Each of Hawthorn Suites by Wyndham's 73 suites contains a sofa bed, kitchenette, refrigerator and microwave - perfect for a weekend getaway or longer stay. Additional amenities include a hot breakfast buffet, high-speed internet access, a heated indoor pool, 24-hour fitness center and a lobby bistro.



	Ceiling Height	Dimensions (ft²)	Banquet	Theater	Classroom	U-Shape
Ballroom	10'	39' × 75' (2,925)	175	250	200	135
Aspen	10'	39' × 21' (819)	50	75	55	25
Birch	10'	39' × 39' (1,521)	75	175	100	50
Chestnut	10'	39' × 20' (780)	50	75	50	25
Boardroom	10'	17' × 17' (289)	-	24	24	24



320 South Towanda Avenue, Normal, IL 61761
HamptonInnNormal.com / 309.452.8900

If you're looking to host a smaller event, the new 128 room Hampton Inn & Suites, located in Normal's Shoppes at College Hills, can accommodate up to 48 people for a reception in their Adlai Stevenson I & II ballroom, and the adjacent Jesse Fell Boardroom is perfect for a small conference of up to twelve.



	Ceiling Height	Dimensions (ft²)	Banquet	Theater	Classroom	U-Shape
Adlai Stevenson (I & II)	10'	24' × 37' (888)	40	70	30	30
Adlai Stevenson (I or II)	10'	24' × 18.5' (444)	20	35	15	15
Jesse Fell Boardroom	10'	Seating for 10, conference style				



1715 Parkway Plaza, Normal, IL 61761
HIExpress.com / 309.862.1600

The Holiday Inn Express & Suites offers beautifully appointed suites, an executive boardroom and more than 3,000 square feet of meeting space that can accommodate up to 90 people for a banquet. Each of the 86 guest rooms includes a 42" flat screen television, free high speed wireless internet, mini-fridge and microwave.



	Ceiling Height	Dimensions (ft²)	Banquet	Theater	Classroom	U-Shape
Florentine Ballroom	10'	30' × 100' (3,000)	90	100	90	60
Florentine I	10'	15' x 50' (1,500)	30	50	30	25
Florentine II	10'	15' x 50' (1,500)	30	50	30	25
Library	10'	15' × 25' (400)	50	50	40	40

ADDITIONAL HOTELS



200 Broadway Avenue, Normal, IL 61761
BloomingtonNormal.Place.Hyatt.com / 309.454.9288

Hyatt Place is centrally positioned in vibrant Uptown Normal. This 114 room hotel is adjacent to Uptown Station's various public transportation services, enabling an ease of access in and around Bloomington-Normal. Nearby attractions include Illinois State University, the Historic Normal Theater, an array of specialty boutiques and a buzzing restaurant and nightlife scene.



ADDITIONAL FACILITIES

MCLEAN COUNTY MUSEUM OF HISTORY

200 North Main Street, Bloomington, IL 61701
MCHistory.org / 309.827.0428

Located on the second floor of the McLean County Museum of History on the square, the Governor Fifer Courtroom is synonymous with elegance and history. This well preserved jewel, with its high ceilings, marble, and period fixtures makes this 1,900 square-feet of space ideal for hosting events. The courtroom can accommodate approximately 120 comfortably in an auditorium style and can be reconfigured for company meetings, retreats and catered receptions. The Town of Normal Classroom, situated on the third floor with a view of the North block of Downtown Bloomington, seats 30 and is also available for rent.



	Ceiling Height	Dimensions (ft²)	Banquet	Theater	Classroom	U-Shape
Meeting Place 1	-	37' x 27' (1,153)	83	100	42	30
Meeting Place 2	-	17' x 24' (420)	32	45	18	12
Meeting Place 3	-	39' x 24' (1,075)	78	90	32	26
Meeting Place 2 & 3	-	56' x 24' (1,495)	112	150	56	38

MILLER PARK PAVILION

1020 South Morris Avenue, Bloomington, IL 61701
CityBlm.org / 309.434.2255

The pavilion at Miller Park was restored in 1977 and continues to be a popular spot for a variety of activities. The main level of the pavilion boasts wooden floors, floor to ceiling windows, and a view of Miller Park Lake. The main level can hold 300-350 or can be divided up into two smaller sections for a capacity of 100-150 each. The upper level of the pavilion contains a carpeted meeting room with a capacity of 75-100. In addition, the East Porch, an outside area protected from the elements by an overhead balcony, can hold 50-60 people.



ADDITIONAL FACILITIES

EWING CULTURAL CENTER

48 Sunset Road, Bloomington, IL 61701
EwingManor.IllinoisState.edu / 309.438.6333

The historic Ewing Manor provides intimate spaces that can accommodate luncheons, dinners and small group meetings or gatherings. With 640 square feet of space, the Conference Room can accommodate 40 people in classroom style and 75 people in theatre style. Smaller rooms in the Manor can be used as breakout or small meeting rooms. A conference phone and Wi-F are available. The Manor also offers outdoor banquet space for larger receptions. The South Lawn can accommodate up to 200 people and the Courtyard up to 150 people.



NORMAL THEATER

209 North Street, Normal, IL 61761
NormalTheater.com / 309.454.9720

The Normal Theater is an amazing place to hold your next special event, be it a business meeting, seminar or closed screening of a film favorite! With seating for 385 and distinctive Art Deco architectural elements, the fully restored Normal Theater, which is conveniently attached to the Marriott Hotel & Conference Center, is a premier venue suited for auditorium-style events. Authentic 35mm film projection, a charming candy counter and classic stadium-style seating can make your special event a memorable one!





SPORTS



“The U.S. Cellular Coliseum has a number of different amenities different from high school gyms, including special lighting and special music effects, which puts on the presence that this is a big, culminating event.”

Tracie Henry - IHSA Assistant Executive Director

WELCOME TO BLOOMINGTON-NORMAL



YOUR DESTINATION FOR SPORTS!

Bloomington-Normal offers excellent facilities, accessibility and services at an affordable cost. Centrally located along Interstates 55, 74 and 39, Bloomington-Normal is the premier destination for your event.

The professional staff members of the Bloomington-Normal Area Convention & Visitors Bureau are ready to assist you from site selection through post-event follow-up to ensure a successful event. We hope you will visit us soon, and let our premier location, facilities and affordability increase attendance at your next meeting.

DRIVING HOURS TO BLOOMINGTON-NORMAL

ILLINOIS

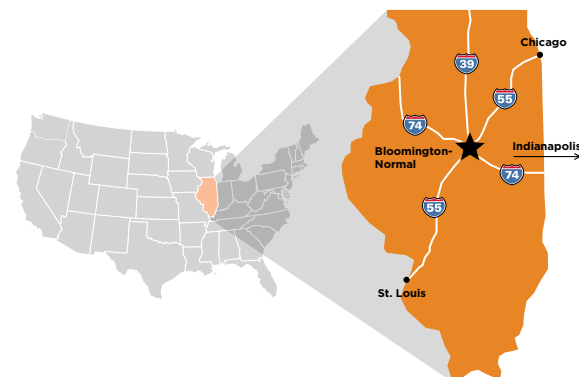
Carbondale / 4
Champaign-Urbana / .75
Chicago / 2
Decatur / .75
Peoria / .5
Quad Cities / 2.5
Rockford / 2
Springfield / 1

MIDWEST

Cincinnati, OH / 4.5
Cleveland, OH / 7.5
Des Moines, IA / 4.5
Detroit, MI / 6.5
Indianapolis, IN / 2.5
Kansas City, MO / 6
Milwaukee, WI / 3.5
Minneapolis, MN / 7.5
Nashville, TN / 6.5
St. Louis, MO / 2.5

BLOOMINGTON-NORMAL

is located in the heart of Illinois and the Midwest. 2 hours from Chicago and 2.5 hours from St. Louis and Indianapolis, our city is easy to access by air, rail, and through the intersection of Interstates 39, 55, 74 and Route 66.



CONTENTS

Group Services	2
Sports Facilities Overview	3
U.S. Cellular Coliseum	4
City of Bloomington	5
Town of Normal	6
Illinois State University	7-8
Illinois Wesleyan University	9-10
Additional Facilities	11
Golf	12-13

BNSPORTS
COMMISSION

 VisitBN

3201 CIRA Drive, Suite 201, Bloomington, IL 61704
inside the Central Illinois Regional Airport

800.433.8226 • 309.665.0033 • VisitBN.org

Published by the BNACVB. The information in this guide was current at the time of publication. The BNACVB assumes no responsibility for errors, changes or omissions and reserves the right to edit any listing for content and/or length. Maps and diagrams are not to scale.

© 2016 BNACVB. All rights reserved. January 2016—200

GROUP SERVICES



The Bloomington-Normal Area Convention and Visitors Bureau is a full-service bureau, offering a number of site selection, pre-event and on-site services.

SITE SELECTION / PLANNING ASSISTANCE

Our staff will research rates and availability of local facilities/hotels for your event. We are happy to coordinate tours of any facility as well as assist with logistical support.

NEWS RELEASE

Our area prides itself on the events we host. At your direction, we will develop and submit a news release to all local media detailing your event. Information for the news release is required at least two weeks prior to your event.

BID PROCESS

We can provide insight and recommendations on a bid process plan as well as assemble a bid team and/or local organizing committee.

TOUR ASSISTANCE

With unique and exciting attractions, your attendees will have a great time in Bloomington-Normal. Our area offers historical tours, cultural activities, arts and theater, educational experiences, golf, shopping and nightlife. Let us know if we can help schedule some exciting activities for spouses and family members during your event.

LITERATURE / MAPS

Please let us know if you would like any information on the Bloomington-Normal area for your participants. We can provide you with visitor guides, coupons, various brochures, tear-off maps or CVB event calendars. We can also customize an information sheet for your website or mailing.

WELCOME

We can arrange for a Bureau representative or local dignitary to welcome your attendees to our city.

REGISTRATION ASSISTANCE

For every 100 rooms per night you use in McLean County, we offer four free hours of on-site registration assistance. Actual volunteer availability may vary.

CVB WEBSITE CALENDAR

Let the CVB help you advertise your event! Submit your event to the CVB's online calendar and reach our area residents and visitors. Events on the online calendar are considered for inclusion in our events brochures, daily social media updates, weekly radio spots, billboard advertisements, print advertisements and annual Visitor Guide.

VOLUNTEER RECRUITMENT

The Bloomington-Normal Area Sports Commission has compiled a database of experienced and enthusiastic volunteers. We can help you recruit volunteers by sending information to the database, and reaching out to the community for additional support of individual events.

BLOOMINGTON-NORMAL AREA SPORTS COMMISSION

The Bloomington-Normal Area Sports Commission, as part of the Bloomington-Normal Area Convention and Visitors Bureau, was created to retain and attract international, national and regional sporting events to the Bloomington-Normal Area. It also serves as a consensus builder among local governments, sports entities, and sports facility owners/operators to create a partnership of success in generating sports related revenue.

The mission of the Sports Commission is to promote the Bloomington-Normal area as a world class sporting event destination and to solicit and support sports activities and events which stimulate our local economy, enhance the area's image, provide outstanding entertainment and participatory opportunities, and contribute to our community's quality of life.

SPORTS FACILITIES OVERVIEW

	City of Bloomington	U.S. Cellular Coliseum	Town of Normal	The Corn Crib	ISU	IWU	Game Time Gym	Central Catholic	District 87	Unit 5	Comlara Park	Moraine View
Archery								-	-	-	-	-
Baseball		-					-	-			-	-
Basketball				-							-	-
Bicycling		-		-	-	-	-	-	-	-		-
Billiards	-	-	-	-		-	-	-	-	-	-	-
Bowling		-		-		-	-	-	-	-	-	-
BMX	-		-	-	-	-	-	-	-	-	-	-
Boxing	-		-	-	-	-	-	-	-	-	-	-
Cheer/Dance	-		-	-			-				-	-
Cross Country		-		-		-	-	-	-	-		-
Fishing		-	-	-	-	-	-	-	-	-		
Football/Rugby				-			-				-	-
Gymnastics	-		-	-				-	-	-	-	-
Golf		-		-		-	-	-	-	-	-	-
Ice Hockey			-	-	-	-	-	-	-	-	-	-
Ice Skating			-	-	-	-	-	-	-	-	-	-
Martial Arts	-		-	-				-	-	-	-	-
Motorsports	-		-	-	-	-	-	-	-	-	-	-
Rodeo	-		-	-	-	-	-	-	-	-	-	-
Soccer		-						-			-	-
Softball		-					-	-			-	-
Swimming		-		-			-	-				
Tennis		-		-			-	-			-	-
Track & Field	-	-	-	-			-				-	-
Volleyball				-							-	-
Wrestling				-			-	-			-	-

U.S. CELLULAR COLISEUM



101 South Madison Street, Bloomington, IL 61701
 USCellularColiseum.com / 309.434.2843

The U.S. Cellular Coliseum, located in historic Downtown Bloomington, is a state-of-the-art multi-purpose recreation and entertainment facility. The Coliseum is a first-class, air-conditioned community and family center; designed specifically to meet the needs of all types of entertainment including major concerts, trade shows, conventions, sporting and civic events. The Coliseum can seat up to 8,000 for concerts and other special events. The theater set-up provides a more intimate experience, with full house curtaining to cut down the size of the seating area to 2,500 - 3,500. Make the U.S. Cellular Coliseum your entertainment destination!

Since its opening, the Coliseum has hosted an array of events, including concerts, family shows, ice shows, motor sports and trade shows. The U.S. Cellular Coliseum is also home to three professional sports teams.

The City of Bloomington's public ice facility, The Pepsi Ice Center, sits adjacent to the U.S. Cellular Coliseum and hosts ice skating lessons, hockey lessons, hockey leagues, Illinois State University hockey, curling leagues, and more.

MAJOR EVENTS HOSTED

Indoor Football League All-Star Game, IHSA Competitive Cheerleading State Finals, IHSA Competitive Dance State Finals, IHSA Dual Team Wrestling State Finals

- Seating: 8,000 • Parking: 2,395 • Lighting: indoor
- Locker Rooms: 4 full team



PEPSI ICE CENTER

201 South Roosevelt Avenue, Bloomington, IL 61701
 BPARD.org / 309.434.2737

The Pepsi Ice Center is an indoor skating facility with a 200' x 85' sheet of ice. The Ice Center is owned and operated by the Bloomington Parks and Recreation Department and, in addition to providing the Bloomington-Normal area with a public indoor skating facility and skating lessons, is home to the Bloomington Jr. Youth Hockey League and an adult hockey league. Both leagues are sanctioned by USA Hockey. The Pepsi Ice Center also offers a special practice time set aside for figure skaters only, as well as curling and broomball for those who wish to participate in non-skating activities. The Pepsi Ice Center is the perfect spot to fulfill the needs of any level skater or hockey player.

Major Events Hosted: Bloomington Jr. Thunder Youth Hockey League Games, ISU Redbirds Club Hockey League Games

- Seating: 200 • Parking: 275 • Lighting: indoor
- Locker Rooms: 4

BLOOMINGTON PARKS & RECREATION DEPT.



115 East Washington Street, Bloomington, IL 61701
 BPARD.org / 309.434.2260

The Bloomington Parks, Recreation and Cultural Arts Department maintains over 1,100 acres of land including 39 park sites and three golf courses. Facilities include a zoo, two outdoor swimming pools, five fishing lakes, a boating concession, 26 outdoor tennis courts (20 lighted), 21 baseball diamonds, four football fields, two disc golf courses, a mobile stage, an outdoor bandstand, five multi-purpose recreation facilities, six nature parks, a miniature golf course, soccer fields and 24 miles of bicycle trail.

The Bloomington Parks and Recreation Department offers numerous facilities including Miller Park, featuring a softball field and bandstand; White Oak Park, featuring football, soccer and softball fields; O'Neil Park and baseball fields with a basketball court, three lighted tennis courts and a pool; and McGraw Park with two baseball fields and six lighted tennis courts.

Facility Uses: Basketball, volleyball, soccer, softball, baseball, running, biking, rollerblading, swimming, tennis, golf and ice hockey.

Additional Facilities: Miller Park Zoo, Lincoln Leisure Center, the Den at Fox Creek, Prairie Vista Golf Course and Highland Park Golf Course.

NORMAL

PARKS & RECREATION DEPT.



100 East Phoenix Street, Normal, IL 61761
Normal.org / 309.454.9540

The Normal Parks and Recreation Department is responsible for the care of over 400 acres of park land, 3.5 miles of linear green space along the Constitution Trail, two pools, numerous softball fields, tennis courts and several playground sites in addition to providing support to a wide range of recreation programs provided by the Town of Normal. Other facilities available for rental include the Normal Theater, Ironwood Golf Course and a Community Activity Center.

The Normal Parks and Recreation Department offers several facilities throughout Normal including Anderson Park & Aquatic Center, Fairview Family Aquatic Center, Champion Fields and 13 miles of the Constitution Trail, a hard-surface, running/biking/rollerblading trail that spans Bloomington-Normal.

Facility Uses: Basketball, volleyball, soccer, softball, baseball, running, biking, rollerblading, swimming, tennis, golf and inline hockey.

Additional Facilities: 17 lighted tennis courts, 12-pit lighted horseshoe court, the Children's Discovery Museum, Connie Link outdoor theater, Maxwell Dog Park, Maxwell Disc Golf Course and Ironwood Golf Course.



CHAMPION FIELDS

300 Maxwell Park, Normal, IL 61761
Softball.Normal.org / 309.454.9540

The Champion Fields complex at Maxwell Park is located in west Normal at the intersection of Parkside and Gregory Streets. The softball complex features 10 lighted fields that are divided into three areas, each of which includes a concession stand and restrooms. The east end, where the Normal Parks and Recreation Department slow pitch leagues are held, is comprised of four fields with 300' fences and a press box. The west end is comprised of four fields with 225' fences and is home to youth fast pitch leagues and weekend tournaments. The south end, which can accommodate slow pitch as well as fast pitch games, is comprised of two fields with 275' fences and a press box.

Major Events Hosted: Amateur Softball Association National Championships, NJCAA Division II Softball National Championships, USA Olympic Softball Exhibition Games, IESA Softball State Finals

- Seating: 2,300 • Parking: 650 • Lighting: yes
- Locker Rooms: no

ADELAIDE STREET FIELD

Gregory & Adelaide, Normal, IL 61790
GoRedbirds.com / 309.438.2000

Adelaide Street Soccer Field is located on the campus of Illinois State University, at the corner of Gregory and Adelaide Streets, about three miles south of Interstate 55. This soccer facility features a natural grass playing field and a press box that is radio wired. Located at the west edge of the Redbird Sports Complex, it features all the comforts necessary for playing, coaching, watching or covering top-notch soccer.

- Seating: 500+ • Parking: 500+ • Lighting: no
- Locker Rooms: no

DUFFY BASS FIELD

Gregory & Adelaide, Normal, IL 61790
GoRedbirds.com / 309.438.2000

The beautiful, award-winning playing surface at Duffy Bass Field is now encompassed by an equally exceptional facility built with fans, players and members of the media in mind. The facility includes a gated baseball complex with seating for over 1,000 spectators, restrooms, concessions, team dugouts and a state-of-the-art press box, among other amenities.

- Seating: 500+ • Parking: 500+ • Lighting: yes
- Locker Rooms: no

ILLINOIS STATE UNIVERSITY



GoRedbirds.com / 309.438.2000

Illinois State University was founded in 1857 as the first public university in the state and has a longstanding tradition of athletic excellence. Other athletic facilities on the campus of ISU include the Evergreen Racquet Club, housing eight indoor and four outdoor courts; Horton Pool; Karin Bone Athletic Study Center; the Kaufman Football Building; McCormick Courts, boasting 12 lighted tennis courts; Owen Strength and Conditioning Center; an outdoor track facility and the Weibring Golf Club.



HANCOCK STADIUM

College & Main, Normal, IL 61790
GoRedbirds.com / 309.438.2000

Hancock Stadium is located on the campus of Illinois State University, at the corner of College Avenue and Main Street. It features a collegiate-size, fully lighted, artificial turf playing field; three concession stands, a box office, security, ushering service and two scoreboards. New renovations include a 5,500 square foot indoor club which offers accessibility to suite and club seat holders, glassed-in views of the field at the 50-yard line, and open, plush seating in the large common lounge. Additional space includes a complete media press box. Hancock Stadium can be used for football, soccer, lacrosse and band competition.

Major Events Hosted: NCAA Division I-AA Playoffs, Special Olympics Illinois Summer Games

- Seating: 15,000 • Parking: 4,000 • Lighting: yes
- Locker Rooms: 2 full team

HORTON FIELDHOUSE

Gregory & Adelaide, Normal, IL 61790
GoRedbirds.com / 309.438.2000

Horton Fieldhouse is located at the Illinois State University Redbird Sports Complex, on the corner of Gregory and Adelaide Streets. This multi-use facility can accommodate track & field, gymnastics, basketball, volleyball, swimming, softball, baseball, football, soccer and has an indoor golf practice facility. Horton Fieldhouse also offers a Super X Mondo® floor, a six-lane 200-meter track with full field event facilities, a six-lane pool (80' x 80') and much more.

- Seating: 2,480 • Parking: 1,150 • Lighting: indoor
- Locker Rooms: 7 (capacity 450)

MARIAN KNEER SOFTBALL STADIUM

Gregory & Adelaide, Normal, IL 61790
GoRedbirds.com / 309.438.2000

The Marian Kneer Softball Stadium is located at the Illinois State University Redbird Sports Complex, on the corner of Gregory and Adelaide Streets. The facility offers a natural grass playing field with dimensions of 190' to left, 210' to center and 190' to right. The field also offers a radio wired press box with fax and phone.

- Seating: 500 • Parking: 350 • Lighting: yes
- Locker Rooms: no

REDBIRD ARENA

College & Main, Normal, IL 61790
GoRedbirds.com / 309.438.2000

Redbird Arena is located on the campus of Illinois State University, at the corner of College Avenue and Main Street. The arena can be utilized for basketball, volleyball and cheerleading. The handicap accessible arena features security, ushering service, wiring for television and radio, catering service, a suspended scoreboard and an ATM. Additional space includes administrative offices, a strength and conditioning center, media room and hospitality rooms.

Major Events Hosted: NCAA Women's Basketball Midwest Regional, IHSA Girls Basketball and Volleyball State Championships, State Farm Holiday Classic, Missouri Valley Conference Women's Basketball Tournament

- Seating: 10,200 • Parking: 4,000 • Lighting: indoor
- Locker Rooms: 8 full team



ILLINOIS WESLEYAN UNIVERSITY



SHIRK CENTER

302 East Emerson Street, Bloomington, IL 61701
IWUSports.com / 309.556.3196

The Shirk Center is a multi-purpose athletic, recreation and wellness complex located on the campus of Illinois Wesleyan University. It contains facilities for basketball, volleyball, track, tennis and wrestling; with a seating capacity of 2,400 and standing room for another 400 spectators. The Activity Center includes a 200-meter six-lane indoor track with full facilities, 2 batting cages and 4 courts for tennis, basketball, volleyball and badminton. The Fitness Center includes 3 racquetball courts and an exercise room with cardiovascular and exercise equipment and free weights. The Shirk Center also houses facilities for golf and baseball/softball infield practice.

Major Events Hosted: NCAA Division III Indoor Track, Volleyball, and Womens Basketball National Championships, NCAA Division III Mens Basketball Tournament Games, Midwest Nationals Wrestling Tournament, State Farm Holiday Classic

- Seating: 2,400 • Parking: 750 • Lighting: indoor
- Locker Rooms: 7 (capacity 400)



IWUSports.com / 309.556.3196

Illinois Wesleyan University was founded in 1850 as "Illinois University" and has a rich history of academic and athletic distinction. Other athletic facilities on the campus of IWU include the Beadles-Morse Tennis Courts, which boasts 8 lighted tennis courts; and the Shirk Center Fitness Center, which includes three racquetball courts, a weight/exercise room with cardiovascular and exercise equipment and free weights.

FORT NATATORIUM

302 East Emerson Street, Bloomington, IL 61701
IWUSports.com / 309.556.3196

Fort Natatorium is housed inside the Shirk Center, a multi-purpose athletic, recreation and wellness complex located just off of Emerson Street on the campus of Illinois Wesleyan University. Fort Natatorium contains an 8 lane, 25 yard by 6 lane, 25 meter swimming pool. The pool is equipped with 1 meter and 3 meter diving boards, waveless gutters, a full Colorado VI® timing system and 11-line scoreboard.

- Seating: 300 • Parking: 750 • Lighting: indoor
- Locker Rooms: 2 (capacity 100)

NEIS SOCCER FIELD

North Franklin Street, Bloomington, IL 61701
IWUSports.com / 309.556.3196

Neis Soccer Field is located just off of East Street on the campus of Illinois Wesleyan University. This natural grass field, with dimensions of 75' x 120', is home to the Titan soccer teams. Locker room facilities for Neis Soccer Field are located inside the Shirk Center.

- Seating: 300 • Parking: 750 • Lighting: yes
- Locker Rooms: 7 (capacity 400)



TUCCI STADIUM

300 East Kelsey Street, Bloomington, IL 61701
IWUSports.com / 309.556.3196

Wilder Field at Tucci Stadium, located on the north edge of campus, has been the site of athletic contests for over a century. Along with the football field, Tucci Stadium has full track and field facilities including an 8-lane 400-meter track and a practice field for hammer, shot, discus and javelin. Additional locker room facilities are located directly behind the stadium in the Shirk Center. Wilder Football Field, home to the Illinois Wesleyan University Titans, is the 5th oldest college field in the nation.

Major Events Hosted: NCAA Division III Football Playoffs, AAU Regional Track and Field Meet, Illinois High School Shrine Game

- Seating: 3,500 • Parking: 750 • Lighting: yes
- Locker Rooms: 2 full team

JACK HORENBERGER FIELD

1611 North Franklin Avenue, Bloomington, IL 61701
IWUSports.com / 309.556.3196

Jack Horenberger Field is located just off of Franklin Avenue on the campus of Illinois Wesleyan University. The baseball field features a tiered grandstand with seating for over 350, home and visiting team dugouts, natural grass playing field, 10-inch sand base in the grassy area, batting cage and picnic area. Field dimensions are 325' to left, 355' to left center, 390' to center, 365' to right center and 315' to right.

Major Events Hosted: NCAA Division III Baseball Regional Tournament, IHSA Baseball Regional and Sectional Games

- Seating: 500+ • Parking: 750 • Lighting: yes
- Locker Rooms: 7 (capacity 400)

WESLEYAN SOFTBALL FIELD

1609 North Franklin Avenue, Bloomington, IL 61701
IWUSports.com / 309.556.3196

Illinois Wesleyan Softball Field sits adjacent to Wilder Field on the campus of Illinois Wesleyan University. The softball field features home and visiting team dugouts, a natural grass playing field and a special clay-sand mixture that promotes drying. Field dimensions are 200' to left, center and right fields. Locker room facilities are located inside the Shirk Center.

Major Events Hosted: NCAA Division III Softball Regional Tournament, IHSA Softball State Tournament Games

- Seating: 300 • Parking: 750 • Lighting: yes
- Locker Rooms: 7 (capacity 400)



THE CORN CRIB

1000 West Raab Road, Normal, IL 61761
NormalBaseball.com / 309.454.2255

The Corn Crib, presented by Illinois Corn Farmers, is the newest sports facility in Bloomington-Normal. This state-of-the-art ballpark seats just over 4,000 in actual seats, and many more on the lawn. The Corn Crib features 10 luxury suites, four concession stands, a state-of-the-art sound system, an LED video board and a SPRINTURF playing surface.

Major Events Hosted: IHSA Boys Soccer State Finals, Frontier League All-Star Game

- Seating: 4,200+ • Parking: 1,200 • Lighting: yes • Locker Rooms: 4

GAME TIME GYM II

404 Olympia Drive, Bloomington, IL 61704
GameTimeGym.com / 309.662.9520

Game Time Gym II is located on the eastern side of Bloomington and is home to the Game Time Gym Sports League. This multi-use, indoor facility can be utilized for soccer, basketball, volleyball, flag football and indoor practice for various other sports.

Major Events Hosted: American Youth Basketball TOUR

- Seating: 200+ • Parking: 100+ • Lighting: indoor
- Locker Rooms: 2 full team

OTHER FACILITIES

MCLEAN COUNTY PONY FIELDS AT THE SHIRA BASEBALL COMPLEX

3707 Ireland Grove Road, Bloomington, IL 61704
MCPonyBaseball.com / 309.662.7669

The Shira Baseball Complex consists of six fields of various size (four with lights) and a concession stand to accommodate players ages 5-19. It is home to all McLean County PONY Baseball League Games.

Parking: 150 • Lighting: yes • Locker Rooms: no

NORD FIELDS

Rabbit Hill Road at East 1200 North Road, Bloomington, IL 61705
ReignSoccer.com

Nord Fields features 4 full-sized and 5 small-sized soccer fields that accommodate all Central Illinois Soccer league play. The Nord Fields are also home to the Midwest Reign Soccer Club. No permanent seating is available.

Parking: 300 • Lighting: yes • Locker Rooms: no

COMMUNITY SOCCER FIELDS

Ireland Grove & Towanda Barnes, Bloomington, IL 61704
IllinoisFusion.com / 309.451.GOAL

The Community Soccer Fields complex offers 20 soccer fields of various sizes used annually by 2,000 area soccer players.

Major Events Hosted: Illinois Fusion Spring Shootout

Parking: yes • Lighting: yes • Locker Rooms: no



GOLF COURSES



THE DEN AT FOX CREEK

3002 Fox Creek Road
Bloomington, IL 61704
TheDenGC.com
309.434.2300

Holes	PAR	Course Yardage	Cart Rental	Driving Range	Pro Shop/ Club Rental
-------	-----	----------------	-------------	---------------	-----------------------

18	72	6,926			
This Arnold Palmer Signature Golf Course features bentgrass tees, greens and fairways that complement the wild prairie grasses that group in the rough. The picturesque Scottish Links Style golf course features 131 strategically placed sand traps, and water hazards on 9 of the 18 holes.					

HIGHLAND PARK GOLF COURSE

1613 South Main Street
Bloomington, IL 61701
HighlandParkGC.com
309.434.2200

18	70	5,539		-	
This course offers narrow fairways lined by old, mature trees and small greens which make for a challenging round. A hilly terrain and beautiful, meandering creek create a very scenic golf course.					

IRONWOOD GOLF COURSE

1901 Towanda Avenue
Normal, IL 61761
Golfronwood.org
309.454.9620

18	72	7,100			
Designed by highly regarded golf course designer Roger Packard, the Ironwood Golf Course meanders through the Ironwood residential subdivision. Course features include a grass tee driving range, large practice putting green, practice bunker and instruction for golfers of all ages at the Golf Academy at Ironwood.					

THE LINKS AT IRELAND GROVE

3807 Ballybunion Road
Bloomington, IL 61704
TheLinksAtIrelandGrove.com
309.661.8040

9	30	1,590			-
In addition to the nine-hole course, The Links at Ireland Grove offers a range with weather protected hitting bays, over an acre of target greens, several bunkers, two fairways, nearly two acres of natural grass hitting area and rental clubs.					

PRAIRIE VISTA GOLF COURSE

502 West Hamilton Road
Bloomington, IL 61704
PrairieVistaGC.com
309.434.2217

Holes	PAR	Course Yardage	Cart Rental	Driving Range	Pro Shop/ Club Rental
-------	-----	----------------	-------------	---------------	-----------------------

18	72	6,745			
The American Contemporary Style course, designed by Roger Packard, features bentgrass tees, greens, fairways and water hazards on 16 of the 18 holes. Other amenities include a large practice putting green, large practice chipping green and a grass driving range.					

WEIBRING GOLF CLUB AT ISU

800 West Gregory Street
Normal, IL 61790
ISUGolf.com
309.438.8065

18	71	6,915		-	
Weibring Golf Club features 18 rebuilt greens and two practice greens, bentgrass tees and fairways, Bunker Guard erosion control and tour-quality Best Sand. This course accommodates approximately 28,000 rounds per year and hosts more than 100 tournaments and outings.					

HAZY HILLS GOLF COURSE

25258 North 1350 East Road
Hudson, IL 61748
309.726.9200

9	35	2,900		-	
The nine-hole course at the Hazy Hills Golf Course in Hudson was designed by Ben Gildersleeve. The design of the holes, rolling terrain and pond gives this course character and charm.					

INDIAN SPRINGS GOLF CLUB

36846 East Comanche Drive
Saybrook, IL 61770
309.475.4111

9	36	3,180			
This course features a challenging, tree-lined layout with two sets of tees. The practice facilities include an oversized putting green with a side bunker and a full length driving range. Outings, playdays and banquets are welcome but must be scheduled in advance.					

THE GOLF LEARNING CENTER

1304 Cross Creek Drive
Normal, IL 61761
AllSeasonsGLC.com
309.829.4653

-		
Named one of Golf Range Magazine's Top 100 Ranges in America, the center offers both indoor and outdoor facilities, a full flight driving range, 35 heated hitting bays and two heated teaching bays. Lessons and a Full Swing Indoor Golf Simulator are available.		



TOURS



“Bloomington is a very welcoming city.”

Greg Gray - Illinois District of the Barbershop Harmony Society

WELCOME TO BLOOMINGTON-NORMAL



YOUR DESTINATION FOR MEETINGS AND CONVENTIONS!

Bloomington-Normal offers excellent facilities, accessibility and services at an affordable cost. Centrally located along Interstates 55, 74 and 39, Bloomington-Normal is your premier meeting destination.

The professional staff members of the Bloomington-Normal Area Convention & Visitors Bureau are ready to assist you from site selection through post-convention follow-up to ensure a successful event. We hope you will visit us soon and let our premier location, facilities and affordability increase attendance at your next meeting.

DRIVING HOURS TO BLOOMINGTON-NORMAL

ILLINOIS

Carbondale / 4
Champaign-Urbana / .75
Chicago / 2
Decatur / 1
Peoria / .75
Quad Cities / 2.5
Rockford / 2
Springfield / 1

MIDWEST

Cincinnati, OH / 4.5
Cleveland, OH / 7.5
Des Moines, IA / 4.5
Detroit, MI / 6.5
Indianapolis, IN / 2.5
Kansas City, MO / 6
Milwaukee, WI / 3.5
Minneapolis, MN / 7.5
Nashville, TN / 6.5
St. Louis, MO / 2.5

CONTENTS

Group Services	2
Tour Options	3-6
Major Events	7
Restaurants	8-9



3201 CIRA Drive, Suite 201, Bloomington, IL 61704
inside the Central Illinois Regional Airport

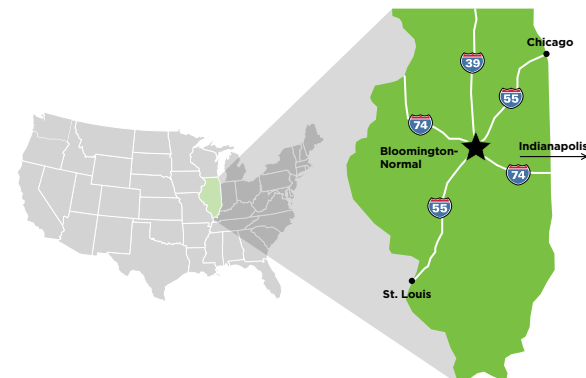
800.433.8226 • 309.665.0033 • VisitBN.org

Published by the BNACVB. The information in this guide was current at the time of publication. The BNACVB assumes no responsibility for errors, changes or omissions and reserves the right to edit any listing for content and/or length. Maps and diagrams are not to scale.

© 2016 BNACVB. All rights reserved. February 2016—200

BLOOMINGTON-NORMAL

is located in the heart of Illinois. 2 hours from Chicago and 2.5 hours from St. Louis and Indianapolis, our city is easy to access by air, rail, and through the intersection of Interstates 39, 55, 74 and Route 66.



GROUP SERVICES



TOUR OPTIONS

The Bloomington-Normal Area Convention and Visitors Bureau is a full-service bureau, offering a number of site selection, pre-event and on-site services.

SITE SELECTION / PLANNING ASSISTANCE

Our staff will research rates and availability of local facilities/hotels for your event. We are happy to coordinate tours of any facility.

NEWS RELEASE

Our area prides itself on the events we host. At your direction, we will develop and submit a news release to all local media detailing your event. Information for the news release is required at least two weeks prior to your event.

LITERATURE / MAPS

Please let us know if you would like any information on the Bloomington-Normal area for your participants. We can provide you with visitor guides, various brochures or tear-off maps. We can also customize an information sheet for your website or mailing.

COUPONS

Let us provide your group with access to our visitor coupons, featuring savings from dozens of area restaurants, businesses and more.

WELCOME

We can arrange for a Bureau representative or local dignitary to welcome your attendees to our city.

NAME BADGES

We will provide name badges for your attendees at a cost. The name badge can hold up to three lines of text as well as your group's logo. A complete list of names is required at least three weeks prior to your event.



BARN QUILT HERITAGE TRAIL

McLeanCountyBarnQuilts.com / 309.663.8306

The Barn Quilt Heritage Trail is a selection of over a dozen area barns that display 8 x 8-foot painted plywood quilt squares on their property as a celebration of McLean County's farming heritage and the talents of local quilters, artists and poets.

Tour Length: Customizable

BEER NUTS, INC.

103 North Robinson Street, Bloomington, IL 61701
BeerNuts.com / 309.827.8580 • 800.BEERNUTS

Bloomington, Illinois is the only city in the world where BEER NUTS are made! A video presentation on the making of BEER NUTS can be viewed in the gift shop, and nuts are available to sample in the Company Store.



BLOOMINGTON CENTER FOR THE PERFORMING ARTS

600 North East Street, Bloomington, IL 61701
ArtsBloom.org / 309.434.2777
866.686.9541

The fascinating history of the BCPA comes to life in the Behind the Curtain Tours. See the beautiful Neoclassical interior design of the BCPA and learn about the updates achieved in the recent renovation.

Tour Length: 60 minutes

CHRISTMAS AT THE MANSIONS TOUR

David Davis Mansion, Ewing Cultural Center and Mystery Mansion
DavidDavisMansion.org / 309.828.1084

Christmas at the Mansions is a community-wide tour of the David Davis Mansion, Ewing Cultural Center and one Mystery House in Bloomington-Normal, Illinois. You'll see these gorgeous homes decorated in period Christmas finery. Take in the architecture, history, postcard scenes of decorated evergreen trees and Christmas wreaths, poinsettia plants, and even hosts dressed in period costumes, as you walk back in time to the late 1800's and early 1900's. Music and other surprises will complement your tour!

Tour Length: 3 hours

CHILDREN'S DISCOVERY MUSEUM

101 East Beaufort Street, Normal, IL 61761
ChildrensDiscoveryMuseum.net / 309.433.3444

Normal's Children's Discovery Museum is three stories of amazing hands-on fun. Families can experience the thrill of hydropower in the Water Works Exhibit, power a city in the You've Got the Power Energy Challenge and for the artistic, Arts Ink features puppetry, the Imagination Theatre, a gigantic Paint Wall, and Art Studio. Visitors will enjoy climbing the two-story Luckey Climber, and will want to experience an array of free science activities offered daily in the Museum's Innovation Station.

CRUISIN' WITH LINCOLN ON 66 VISITORS CENTER

McLean County Museum of History
200 North Main Street, Bloomington, IL 61701
CruisinWithLincolnOn66.org / 309.827.0428

This Visitors Center combines two of McLean County's most significant attractions: President Abraham Lincoln and Route 66. Visitors can compare the travels of Lincoln with those of tourists and automobilists during the golden era of Route 66. Interactive exhibits, video monitors, visitor information and a gift shop are also included in the center.

Tour Length: Customizable



DAVID DAVIS MANSION

1000 East Monroe Drive, Bloomington, IL
61701 DavidDavisMansion.org
309.828.1084

This elegant, 36 room estate of Judge David Davis was completed in 1872 and is a model of mid-Victorian style and taste. A tour of the estate includes a walk-through of the Mansion and Sarah's Garden, as well as an option to view the self-guided exhibit "Prologue to Presidency: Abraham Lincoln on the Illinois Eighth Judicial Circuit."

Tour Length: 60 minutes

EPIPHANY FARMS HOSPITALITY GROUP

9591 North 1540 East Road, Bloomington, IL 61701
EpiphanyFarms.com / 309.828.2323

Epiphany Farms Enterprise observes the "Farm to Fork" concept, which practices sustainable, beyond organic, environmentally friendly techniques. During its growing season, Epiphany Farms educates tour groups about ethical farming practices and inspires visitors about the future of farming, food and family.

Tour Length: 60 minutes
Seasonal (June-October)

EVERGREEN CEMETERY DISCOVERY WALK

Evergreen Memorial Cemetery
MCHistory.org / 309.438.2586

For two weeks each fall, history is brought to life through costumed actors assuming the intriguing characters of McLean County's ancestors in the beautiful grounds of Evergreen Memorial Cemetery. Put on your walking shoes and bring your family to participate in this fascinating, award-winning outdoor theater program.

Tour length: 90 minutes
Seasonal

EWING CULTURAL CENTER

48 Sunset Road, Bloomington, IL 61701
EwingManor.IllinoisState.edu / 309.829.6333

This community landmark includes Ewing Manor, the Genevieve Green Gardens and the Theatre at Ewing which hosts the annual Illinois Shakespeare Festival. Completed in 1929 in the Channel-Norman style, Ewing Manor embodies the grace, practicality, and natural beauty envisioned by its original owner, Hazle Buck Ewing. Tours of the Manor and specialty programs with the Ewing Manor Master Gardener are available.

Tour Length: 60 minutes

FUNK PRAIRIE HOME AND GEM & MINERAL MUSEUM

10875 Prairie Home Lane, Shirley, IL 61772
FunkPrairieHomeMuseum.com / 309.827.6792

The Funk Prairie Home was built by hand in 1863-1865 by Illinois State Senator LaFayette Funk. Visitors can view 13 rooms of original furnishings, including a working Victrola. The Gem & Mineral Museum houses a portion of LaFayette Funk II's extensive collection of rare specimens.

Tour Length: 2 hours

FUNKS GROVE PURE MAPLE SIRUP

5257 Old Route 66, Shirley, IL 61772
FunksPureMapleSirup.com / 309.874.3360

The Funk family business of producing pure maple sirup began in Funks Grove in 1824. Guided tours of the grounds are offered during the sirup-making season and showcase the Funk family process. Funks Pure Maple Sirup and other Funks products can be purchased at the store.

Tour Length: 60 minutes



LOOKING FOR LINCOLN AUDIO TOUR

200 North Main Street, Bloomington, IL 61701
MCHistory.org / 309.827.0428

This CD-based audio tour presents President Lincoln as a returning visitor, talking about the places he visited and their meaning to him. Whether you drive the route or enjoy the tour from your favorite armchair, the audio tour is a special and novel way to learn about the history of Lincoln and the role Bloomington-Normal played in his life. The CD can be purchased at the McLean County Museum of History.

Tour Length: 90 minutes

MACKINAW VALLEY VINEYARD

33633 IL Route 9, Mackinaw, IL 61755
MackinawValleyVineyard.com / 309.359.9463

Mackinaw Valley's oldest vineyard offers a spacious tasting room where guests can enjoy a panoramic view of the valley and majestic vineyards. The vineyard holds game and trivia nights, and during the summer and early fall months it hosts Saturday evening concerts and four annual festivals. Murder Mystery Dinners can be scheduled at any time for groups.

Tour Length: Varies

MCLEAN COUNTY MUSEUM OF HISTORY

200 North Main Street, Bloomington, IL 61701
MCHistory.org / 309.827.0428

The museum features permanent and national, award-winning rotating exhibits that explore the history of Central Illinois. A nearby Route 66 Wayside Exhibit tells the story of the Mother Road's great significance and impact on the community.

MILLER PARK ZOO

1020 South Morris Avenue, Bloomington, IL 61701
MillerParkZoo.org / 309.434.2250

Miller Park Zoo offers many exhibits and Zookeeper interaction opportunities that are enjoyed by the whole family. The Zoo features many large indoor and outdoor exhibits such as a Tropical America Rainforest, Wallaby WalkAbout and Animals of Asia. For groups of over 50 people, the Zoo can be rented out for a one-of-a-kind after hours experience. Various packages are available and can be accommodated to fit your needs.

Tour Length: Customizable



PRAIRIE AVIATION MUSEUM

2929 East Empire Street, Bloomington, IL 61704
PrairieAviationMuseum.org / 309.663.7632

With a collection of preserved aircraft on display, revolving aviation exhibits and memorabilia, a 1941 Link Trainer and a miniature theater, the museum creates an environment where visitors can learn more about the contributions of aviation.

Tour Length: Varies

RADER FAMILY FARMS

1238 Ropp Road, Normal, IL 61761
RaderFamilyFarms.com / 309.275.8765

This seasonal farm is open each fall. Attractions inside the farm include: The Pumpkin Blossom Café and Gift Shoppe, Harvest Brew coffee shop, picnic area and a variety of produce. Activity admission includes access to a jumping pillow, school house education barn, little toddler village, giant mountain slide, climbing straw castle, corny bins, cattle chute jump, rodeo round-up, big digger sandbox, family hayrack rides, train rides for kids, farm animals and live music.

Tour Length: Varies
Seasonal (September-October)



MAJOR EVENTS

ROPP JERSEY CHEESE FARM

2676 Ropp Road, Normal, IL 61761
RoppCheese.com / 309.452.3641

Visitors to the Ropp Jersey Cheese processing facility can see first-hand how fine quality cheeses are made by 6th generation McLean County dairy farmers. Tours also include a walk-through of the retail store which features a cheese slicing room and viewing windows.

Tour Length: 60 minutes

ROUTE 66 DRIVING TOUR

VisitBN.com / 309.665.0033

The Mother Road runs through both Bloomington and Normal! The Bloomington-Normal Area Convention and Visitors Bureau has created a self-guided tour of both historic and major attractions along Route 66 in Bloomington-Normal.

Tour Length: Customizable

SPIRITS OF BLOOMINGTON

309.846.4306

Further your knowledge of President Lincoln and Mary Todd Lincoln and other 'characters' of Bloomington-Normal! This entertaining group offers step-on service, historical presentations, murder mystery dinners, walking tours, and more. Costumed guides will delight the audience with both humorous and educational tales.

Tour Length: 60 minutes

THE TEA LADIES, INC.

TheTeaLadiesInc.com / 309.827.2200

The Tea Ladies provide an entertaining and educational history program for any special event, group meeting or tour group. Over 20 Victorian/Edwardian themed programs are available to choose from. Each program is presented in authentic costume and is enhanced with props, music and historic items related to the program choice.

Program Length: 40 minutes

TWIN GROVES WIND FARM

13682 North 2900 East Road, Ellsworth, IL 61737
TwinGrovesWindFarm.com / 309.724.8278

The Twin Groves Wind Farm is located on two prominent moraines in eastern McLean County. Tours of the farm include information on the facility which produces 396 megawatts of affordable, pollution-free wind energy. Tours begin at the Twin Groves Lookout Visitor Area.

Tour Length: 60 minutes

WHITE OAK VINEYARDS, INC

8621 East 2100 North Road, Carlock, IL 61725
WhiteOakVineyardsInc.com / 309.376.3027

White Oak Vineyards grows 12 grape varieties on 11.5 acres and features a tasting list of 12 wines. A log home on the property has been remodeled into the winery and tasting room with a comfortable, warm and inviting atmosphere. The wrap around porch offers lovely views of the vineyards, pond and surrounding countryside. Tours include a walk-through of the vineyards and a wine tasting.

Tour Length: 90 minutes

AMERICAN PASSION PLAY

600 North East Street, Bloomington, IL 61701
AmericanPassionPlay.org
309.829.3903 • 800.354.9640

The American Passion Play takes the audience to Palestine, 30 A.D. and tells the story of Jesus' entire ministry according to the King James Version of the Bible. The audience travels with Christ, seeing the world as He saw it, complete with live animals, pipe organ music, and settings and costumes that re-create the first century Galilee.

Performance Length: 3.5 hours with intermission

CHAMPAGNE BRITISH CAR FESTIVAL

David Davis Mansion
1000 Monroe Drive, Bloomington, IL 61701
CBCF-Bloomington.com / 309.828.1084

This annual, three-day event makes a stop in Bloomington on the final day of the festival. Presented by the Flatlanders British Car Club, the Champagne British Car Festival features vehicles of all British makes, including Austin-Healeys, Aston-Martins and Jaguars on display on the lawn of the David Davis Mansion.

ILLINOIS SHAKESPEARE FESTIVAL

Ewing Cultural Center
48 Sunset Road, Bloomington, IL 61701
TheFestival.org / 309.438.2535 • 866.467.4253

The Illinois Shakespeare Festival exemplifies a long-standing tradition of professional theatre devoted to performing the plays of William Shakespeare. In addition to the main stage show, theatre-goers can also enjoy behind the scenes tours, live jazz music, nightly Green Shows, fine art fairs and ice cream socials with the cast and crew.

LINCOLN'S FESTIVAL

Downtown Bloomington
MCHistory.org / 309.827.0428

Celebrate Abraham Lincoln's legacy in Bloomington-Normal and enjoy Civil War re-enactments, traditional craft demonstrations, children's activities, live music, talks, tours, and wagon and carriage rides. An acting troupe performs from the program Encounters with Lincoln's Bloomington, which features stories about Lincoln during his time in Bloomington-Normal.

SUGAR CREEK ARTS FESTIVAL

Uptown Normal
MCAC.org / 309.829.0011

The streets of Uptown Normal are painted with artists and art lovers alike during the annual Sugar Creek Arts Festival. The festival only allows original pieces of artwork to be shown so visitors are ensured a one-of-a-kind experience.

SWEET CORN BLUES FESTIVAL

Uptown Normal
UptownNormal.com / 309.454.9760

Sidewalk sales, arts, crafts, flea market vendors and over 50,000 ears of fresh sweet corn fill the streets of Uptown Normal each August to welcome back the students at Illinois State University. Come out and enjoy the fun, food and some of the best blues music around!



RESTAURANTS

GROUP-FRIENDLY



AVANTI'S ITALIAN RESTAURANT

3302 East Empire Street, Bloomington, IL 61704
[AvantisBloomington.com](#) / 309.662.4436

Italian Cuisine | Occupancy: 136 main dining, 70 people maximum for private banquet room

Avanti's Italian Restaurant was established in Normal in 1971 and is known for their home style pasta, pizza, salads and sandwiches.

BAXTERS

3212 East Empire Street, Bloomington, IL 61704
[BaxtersGrille.com](#) / 309.662.1114

American Cuisine/Steakhouse | Occupancy: 72 bar and 207 main dining/lobby, 85 people maximum for private banquet room

Baxters offers seasonal menus filled with delicious signature dishes of steak, seafood and chops.

BIAGGI'S RISTORANTE ITALIANO

1501 North Veterans Parkway, Bloomington, IL 61704
[Biaggis.com](#) / 309.661.8322

Italian Cuisine | Occupancy: 160 main dining, 100 people maximum for private dining

Biaggi's has a wide variety of classic Italian dishes and offers a comfortable atmosphere and a relaxing place to dine.

CJ'S RESTAURANT & CATERING

2901 East Empire Street, Bloomington, IL 61704
309.663.4444

American Cuisine | Occupancy: 200 main dining, 60 people maximum for semi-private dining room

This family-owned restaurant offers American and Italian cuisine that is made-to-order with authentic, high-quality ingredients.

CRACKER BARREL

502 Brock Drive, Bloomington, IL 61701
309.829.3155 / [CrackerBarrel.com](#)

American Cuisine | Occupancy: Take groups of any size. Seats in sections of four. No private dining.

Cracker Barrel is the place to go if you're craving some home-style country food. Breakfast is served all day, while lunch and dinner favorites include the Roast Beef Dinner and the Country Fried Steak.

EPIPHANY FARMS RESTAURANT

220 East Front Street, Bloomington, IL 61701
[EpiphanyFarms.com](#) / 309.828.2323

American Cuisine | Occupancy: 140 main dining, 200 people maximum for private banquet room

Epiphany Farms Restaurant is a unique farm-to-fork restaurant. Using socially-conscious farming techniques, their dishes are made from the freshest locally-grown ingredients.

JIM'S STEAKHOUSE

2307 East Washington Street, Bloomington, IL 61701
[JimsBloomington.com](#) / 309.663.4142

American Cuisine/Steakhouse | Occupancy: 80-100 main dining, 85 people maximum for private dining

At Jim's Steakhouse, they pride themselves on serving the finest quality beef available. They are one of the only establishments in Central Illinois that dry-ages their meat, a process that intensifies the flavor and texture. They are also known for mouth-watering seafood and appetizers.

LUCCA GRILL

116 East Market Street, Bloomington, IL 61701
[LuccaGrill.com](#) / 309.828.7521

Italian Cuisine | Occupancy: 49 main dining, 50 people maximum for second floor, private dining room

The Lucca Grill was established in 1935 by two brothers and named for their Italian hometown. Customers can enjoy the delicious pizza and appetizers as they appreciate the ornate tin ceiling and antique mahogany bar.



MEDICI

120 West North Street, Normal, IL 61761
[MediciNormal.com](#) / 309.452.6334

American Cuisine | Occupancy: 80 patio, 25 small private, 64 sit down private, 200 main not sit down, 64 people maximum for second floor, private dining room with bar

At Medici, they appreciate the importance of details in both their food and décor. The restaurant features delicious entrees, the largest selection of domestic microbrews in Bloomington-Normal, an outdoor patio and a 30-foot Mulberry tree in the atrium.

MICHAEL'S RESTAURANT

110 West Washington Street, Bloomington, IL 61701 / [MichaelsBloomington.com](#)
309.820.1330

American Cuisine | Occupancy: 135 main dining, 60 people maximum for second floor, private dining room

Michael's Restaurant offers appetizers, salads, pastas, steaks, pork chops, chicken, veal, sandwiches, pizza and homemade desserts. They are known for their delicious Sunday brunch.

OZARK HOUSE

704 South McGregor Street, Bloomington, IL 61701 / [TheOzarkHouse.com](#) / 309.827.3900

American Cuisine | Occupancy: 100 main dining, 175 people maximum for private banquet room

The Ozark House is a locally-owned restaurant that is known for their homemade recipes, succulent BBQ dishes, hand-cut steaks, and exceptionally fresh seafood.

PIZZA RANCH

1211 Holiday Drive, Bloomington, IL 61761
309.820.9777 / [PizzaRanch.com](#)

American Cuisine | Occupancy: 80 people in back two semi-private dining rooms

Pizza Ranch opened in Bloomington in 2015 and features a popular buffet of salad, sides, pizza and chicken. End your meal with a delicious desert pizza.

REALITY BITES

414 North Main Street, Bloomington, IL 61701
[RealityBitesBlm.com](#) / 309.828.1300

American Cuisine | Occupancy: 65 main dining, 35 people maximum for second floor, semi-private dining room

Reality Bites offers great food and a night out on the town. They offer delicious tapas and entrees in a trendy atmosphere.

SWINGERS GRILLE

1304 Cross Creek Drive, Normal, IL 61761
[SwingersGrille.com](#) / 309.829.5777

American Cuisine | Occupancy: 190 main dining, 80-100 people maximum for private banquet room

Using a seasonally-inspired menu, Swingers Grille has tasty entrees as well as an award-winning international wine selection. They also feature a delicious Sunday brunch.

TONY ROMA'S

1601 Jumer Drive, Bloomington, IL 61761 / 309.662.2525 / [TonyRomas.com](#)

American Cuisine/Steakhouse | Occupancy: 30 main-dining, 80 in private dining room, 40 in second private dining room.

Ribs, steak, chicken, burgers and seafood: Tony Roma's has it all. Their mini-desserts are the perfect way to end your meal.



